

# DOUBLE LINE // PARTNERS

## TSDS DCD Advisory Group Webinar

August 19, 2010

[www.texasstudentdatasystem.org](http://www.texasstudentdatasystem.org)

# Welcome

- On behalf of the Texas Student Data System team, we want to **THANK YOU** for your continued interest in providing feedback on the dashboard reporting tools as a participant in the TSDS DCD Advisory Group.
- Over 160 teachers, principals, superintendents and administrators have volunteered to be part of this group whom will review and provide input for future iterations of the district dashboard reporting tools.
- It is feedback like yours that will ensure the reporting tools will best meet the needs of districts across the state.

# Webinar Tips

- Participants will be muted.
- At any time during the call, you can use the chat function to submit questions which only appear to the host. We will review and consolidate questions to share with you at specific break points in the call.
- We also have a polling function to ask specific questions.
- If we do not get to all of your questions, we will plan to document and address the questions on the TSDS site.
- Should you have technical problems, there is a Help desk at bottom of the screen.
- The presentation material will be posted on the TSDS DCD Advisory Group page ([www.texasstudentdatasystem.org/dcd-advisory/](http://www.texasstudentdatasystem.org/dcd-advisory/))

# Webinar Agenda

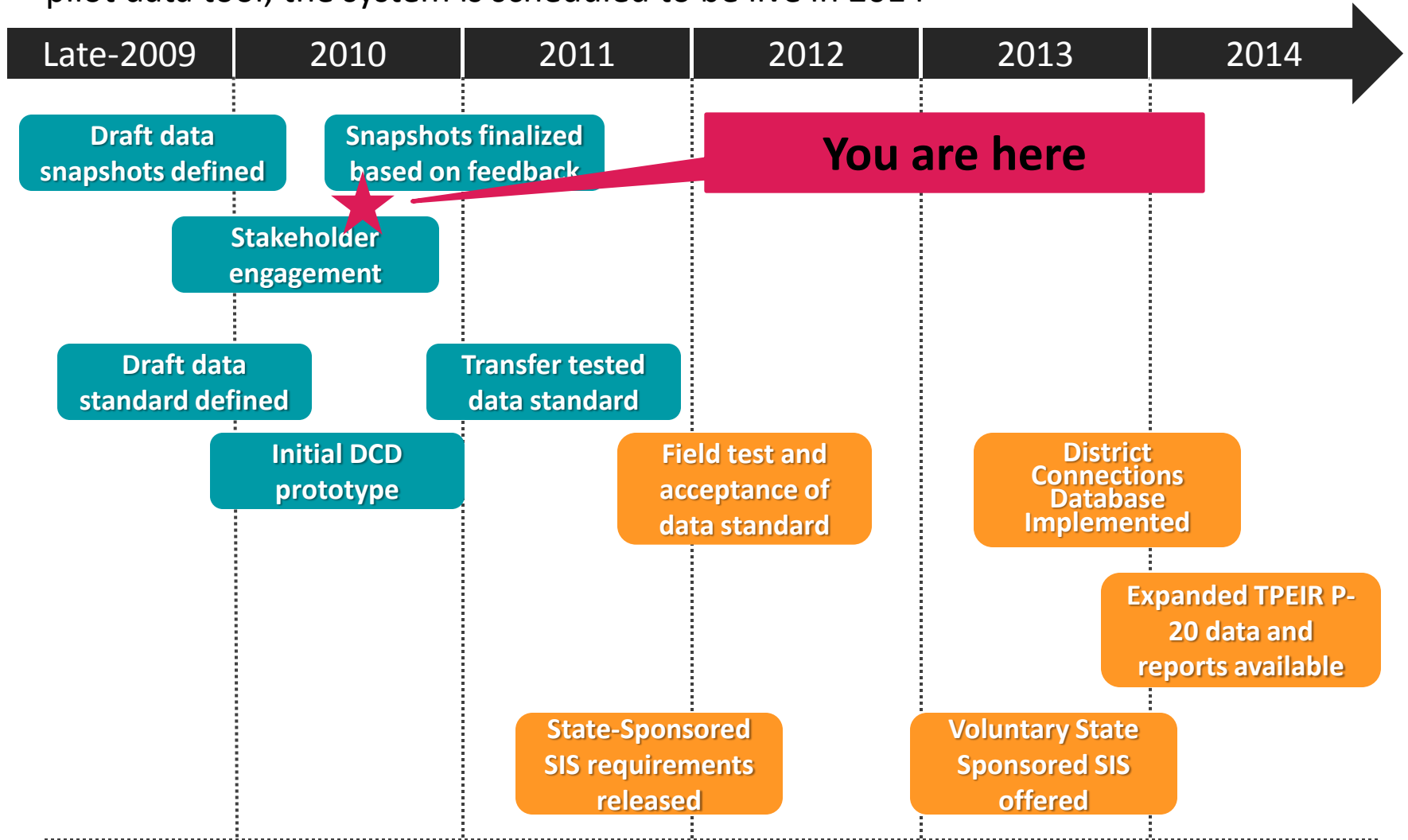
- Advisory Group Objectives
- Project Status and Timeline
- Progress Update
- Integrating Feedback/Pilot Demonstration
- Future Sessions

# Advisory Group Objectives

- The purpose of this advisory group is to provide feedback on updated versions of the District Connections Database dashboards and reporting tools that were seen at various stakeholder feedback sessions and on the website
- It is anticipated that the DCD Advisory Group will be in place for the next 12-18 months; during this time period, there will be up to four scheduled meetings, including today's webinar, where the group participants will have the opportunity to review dashboard tool content and provide feedback.
- We have established a page on the TSDS website for updates and information pertaining to the DCD Advisory Group – it can be found at: <http://www.texasstudentdatasystem.org/dcd-advisory/>. This page will include updates on the project activities, background material, upcoming events and registration for events.

# Project Timeline

Materials reviewed to date (including today) are “mock-ups” of the system design and a pilot data tool; the system is scheduled to be live in 2014



**You are here**

# Progress Update – Gathering Feedback

Feedback has been (and continues to be) gathered from educational stakeholders across the state of Texas over the past seven months and across several different forums

## Reaching Out to Stakeholders

- **Regional Forums** – nearly 2,000 educators (teachers, campus leaders, district leaders, and PEIMS/IT coordinators) attended one of nine regional forums held at different sites across the state of Texas in the early spring
- **Webinar** – approximately 200 educators participated in an online version of the regional forums held in early spring
- **Texas Classroom Teachers Association Conference** – 225 primary and secondary educators from across the state attended a presentation of the TSDS solution and also participated in 3-hour breakout sessions to provide feedback
- **Principal Tool Feedback Sessions** – principals from Austin and Round Rock Independent School Districts contributed their feedback in designing tools and reports specifically for campus leaders
- **Website** – Feedback is sent directly from website via the “Provide Comments” section and is open throughout the course of the project.

# Progress Update – Capturing Feedback

Feedback was captured from both “clean slate” information needs lists, as well as from direct evaluation of dashboard reports, website feedback, and other avenues

Information I Need	Rank	Priority
Picture & ID # & grade level	6	beginning
Attendance	7	each
Scores (TAKS, Info in all areas, SAT, ACT, AP)	4	3-4
ISS & Suspension	5	well
Parent Info	3	data
ability to graph their individual process on skill or TEKS w/ability to print individual info per page to pass out to student	1	data
IEP info - links to learning disability	2	data
demographics (incl. language of parents & student)	8	data

**Handwritten Annotations on Dashboard:**

- with widgets & ability to graph data & color** (pointing to the Scores section)
- add accountability rating indicator and maybe other metrics such as dropout & completion rate** (pointing to the Student Demographics section)
- add a measure for student-staff ratio as well** (pointing to the Administration section)
- highlight this as it is a key indicator** (pointing to the State Accountability Training section)
- change this to 2 separate sections - one for student programs (ELL, ST, etc) and one for student characteristics (eco. dis, LEP, etc)** (pointing to the Peer Campuses section)
- move up to top** (pointing to the State Accountability Training section)
- need to be able to select the characteristics that define the peer group because the group members could change based on what is being measured.** (pointing to the Peer Campuses section)

**Dashboard Data:**

Section	Item	Current	2-yr. Trend
Student Demographics	Female	47.80%	
	Male	52.20%	
Race / Ethnicity	African-American	5.40%	↔
	Asian	1.10%	↔
	Hispanic	14.70%	▲
	Native American	0.00%	↔
	White	78.80%	▼
Students by Program	English as a Second Language	6.30%	▲
	Gifted / Talented	12.10%	↔
	Special Education	11.30%	↔
	Career Tech	45.20%	▲
State Accountability Training	Economically Disadvantaged	36.50%	▲
	Limited English Proficiency	7.30%	▲
Peer Campuses	All-Risk	30.70%	▼
	AYP-ACLB - Areas Missed	Acceptable	▲

# Integrating Feedback/Pilot Demonstration

- The stakeholder feedback captured to date has provided significant guidance in revising the content and functionality of the dashboard tool you will be reviewing today
- Concurrently, a pilot project conducted with Lubbock ISD over the past six months enabled population of a working dashboard model
- The dashboard demonstration you will see today contains actual (though anonymized) student data for the high schools in their district

**DEMO**

# Integrating Feedback – Classroom Information

The classroom information tool provides educators with a quick overview of their current students, as well as the ability to “click-thru” for more detailed information

## Stakeholder Requests

- Information all in one place; easy to access
- Special accommodations clearly noted for all students
- Content should reflect top information needs
- Ability to:
  - Sort by column for small group formation
  - Assess student needs by TAKS objective
  - Identify patterns within your classroom (attendance, grades)



Student	Accommodations	ATTENDANCE/DISCIPLINE		ASSESSMENTS-TAKS		GRADES	
		Class Period Absence	Discipline Incidents	ELA/Reading	Math	#Grades Below C	Grades Falling >10%
Amanda Sharpe	☆	88%	0	2444	2242	0	0
Amy Jacques	△	98%	0	2222	2222	2	3
Andrea Wade	△	28%	2	1970	1885	5	2
Shandy Aidy		08%	0	2108	1913	3	1
Brooke Scott		87%	0	2088	1977	6	4
Carl Nell	△	08%	0	2222	2285	1	1
Cheronda Williams	☆	50%	0	2400	2423	0	1
China Sampson		42%	0	2205	2423	1	0
Chantae Tenner		247%	0	2281	1940	6	4
Frankie Williams		72%	1	2400	2245	1	2
Jennifer Hunt	△	32%	1	2022	1880	1	1
Johnathon Delancey	△	130%	0	2183	2002	7	2
Jose Witherspoon		176%	0	2332	2145	4	3
Juan Yellott		54%	0	2099	2072	2	1
Jalio Oliveira		117%	0	2126	2281	2	1
Justin Whiting	△	28%	0	2401	2229	2	1
Keena Horn	☆	142%	1	2229	2219	1	2
Miquel Wyatt		203%	0	2400	2478	0	1
Maura Sandoval	△	109%	1	2025	1926	5	0
Stephanie Butler	△	7.1%	0	2100	2123	2	1
Wesley Campbell	△	75%	0	2332	2171	5	1

# Integrating Feedback – Student Academic History

A condensed version of students' full academic history will enable educators to see when a class was taken, course performance by subject, and credits earned

## Stakeholder Requests

- Complete Academic history for students, including:
  - Performance (grade received)
  - Credits earned
  - Timing
  - Instructor
- Ability to get abbreviated information from student's transcript in single place



Course History							GPA	Cumulative Credits Earned: 23.5
Jump to subcategory: ELA/Reading   Mathematics   Science   Social Studies   All Other Subjects								
Subject Area							Total Credits Earned	
<b>ELA / Reading</b>							<b>3.5</b>	
Course Number	Description	Instructor	Semester	Grade Level	Final Course Grade	Credits Earned		
LENR11	English I (1 Unit)		1	9	77	0.5		
LENR11	English I (1 Unit)		2	9	80	0.5		
LENR21	English II (1 Unit)		1	10	71	0.5		
LENR21	English II (1 Unit)		2	10	81	0.5		
LENR31	English III (1 Unit)		1	11	72	0.5		
LENR31	English III (1 Unit)		2	11	88	0.0		
LENR31	English III (1 Unit)		2	11	80	0.5		
LENR41	English IV (1 Unit)		1	12	87	0.5		
<b>Mathematics</b>							<b>3.5</b>	
Course Number	Description	Instructor	Semester	Grade Level	Final Course Grade	Credits Earned		
MALR11	Algebra I (1 Unit)		1	9	77	0.5		
MALR11	Algebra I (1 Unit)		2	9	80	0.5		
MGER21	Geometry (1 Unit)		1	10	83	0.0		
MGER21	Geometry (1 Unit)		2	10	85	0.0		
MGER21	Geometry (1 Unit)		1	11	76	0.5		
MMMR21	Mathematical Models With Applications		1	11	80	0.5		
MGER21	Geometry (1 Unit)		2	11	82	0.5		
MMMR21	Mathematical Models With Applications		2	11	85	0.5		
MALR31	Algebra II (1 Unit)		1	12	80	0.5		
<b>Science</b>							<b>2.0</b>	
Course Number	Description	Instructor	Semester	Grade Level	Final Course Grade	Credits Earned		
SPSR11	Integrated Physics And Chemistry		1	9	77	0.5		
SPSR11	Integrated Physics And Chemistry		2	9	80	0.5		
SBR21	Biology (1 Unit)		1	10	85	0		
SBR21	Biology (1 Unit)		2	10	72	0.5		
SBR21	Biology (1 Unit)		1	11	78	0.5		
SCMR31	Chemistry (1 Unit)		1	11	82	0		
SCMR31	Chemistry (1 Unit)		2	11	84	0		
SCMR31	Chemistry (1 Unit)		1	12	87	0		
<b>Social Studies</b>							<b>3.5</b>	
Course Number	Description	Instructor	Semester	Grade Level	Final Course Grade	Credits Earned		
TWGR11	World Geography Studies (1 Unit)		1	9	75	0.5		
TWGR11	World Geography Studies (1 Unit)		2	9	80	0.5		
TWHR11	World History Studies (1 Unit)		1	10	86	0.5		
TWHR11	World History Studies (1 Unit)		2	10	95	0.5		
TAMR31	US History Since Reconstruction (1 Unit)		1	11	84	0.5		
TAMR31	US History Since Reconstruction (1 Unit)		2	11	90	0.5		
TAGR40	United States Government (1/2 Unit)		1	12	72	0.5		

# Integrating Feedback – Generating Student Lists

Campus leaders currently generate a number of student lists manually to track performance; “clickable” list generation is likely to save considerable time

## Stakeholder Requests

- Ability to click on key charts/metrics and automatically generate a list of students in that category
- In addition to the metric performance, any student list generated should also include:
  - Student grade (or cohort)
  - Special accommodations
  - Participation data (attendance/discipline)
  - Assessment data for ELA/Math
  - Academic data (Grades below C, Falling grades)



Credit Accumulation  
% of students meeting required # of credits for Recommended Graduation Plan as of the end of the most recent grading period

10th Grade 85.6% 80.0% 88.6%

	Metric Value	Participation		Assessments - TAKS		Grades	
		Class Period Absences	Discipline Incidents	ELA/Reading	Math	# Grades Below C	Grades Falling > 10%
Kevin Ross	9	3.3%	0	2111	2125	1	1/7
Stacey Salas	7.5	7.1%	0	2133	1852	4	0/7
Ketal Goodman	8	9.6%	0	2209	2350	1	0/7
Stacy Rehrig	8.5	27.7%	0			0	1/9
Omar Warren	8	8.8%	0	2054	1815	7	4/8
Victor Hurtado	9	7.9%	0	2004	2015	1	0/8
Courtney Lara	9	7.5%	0	2100	2100	7	0/8
Kenneth Jones	7	8.4%	0	2133	2125	5	1/7
Charli Gomez	6.5	11.3%	0	2156	2030	6	0/7
Joseph Bircher	9	7.9%	0	2209	2061	4	0/8
Crandall Triplett	7	44.1%	0	2209	1984	5	2/6
Mira Koudeika	7.5	35.2%	0	2072	1984	5	3/8
Tamisha Szydlak	4	22.2%	0	2037	2100	7	2/7
Daniel Rodriguez	8.5	9.6%	0	2020	1752	3	2/7
Terrell Collins	5.5	0.0%	0			1	
Ellen Rincon	7	19.7%	0	1926	1852	5	1/7
Jennifer Villanueva	8	23.1%	0	2209	2159	0	0/5
Laura Escobar	9	20.5%	1	2229	2229	3	3/4
Thieu Floyd	6	11.7%	0	2004	1852	3	1/7
Lisa Sanchez	8.5	13.8%	0	2181	1968	1	0/7
Molecia Douglass	5	19.7%	1	2156	1870	5	0/7
Darnell Olsson	7	8.4%	0	2054	1904	1	0/6
Jerry Charles	8.5	17.6%	0		2030	3	2/7
Ralph Driver	8.5	18.0%	0	2100	1887	4	1/8

11th Grade 82.9% 80.0% 89.9%

12th Grade 74.7% 80.0% 85.3%

# Questions & Answers

## Texas Student Data System

[Texas Student Data System](#)

[District Connections Database](#)

[Reference Documents](#)

[Upcoming Events](#)

[F.A.Q.](#)

[Provide Feedback](#)

The Texas Student Data System (TSDS) will provide educators and policymakers with actionable, timely data to improve student performance while easing the burden of data collection on districts.

Full deployment of the TSDS solution will occur over the next 5 years. This Web site was created as a tool to help education stakeholders stay apprised of the latest information about TSDS, participate in forums and webinars, access presentations and materials, and provide valuable feedback to the project team.



# Future Sessions

- The remaining sessions will be scheduled in late fall and early spring as new versions of the dashboard are available for review
- It is anticipated that future sessions will enable us to capture your feedback on revised versions of materials seen today, as well as new reports and tools, including:
  - Elementary School dashboards
  - Middle School dashboards
  - District-level dashboards
  - Principal tools and reports
- We want to **THANK YOU** again for your interest in participating on the DCD Advisory Group and look forward to your feedback in the coming months. If you have any questions regarding the DCD Advisory Group, or would like to provide additional feedback, please use the feedback form on the TSDS site:  
<http://www.texasstudentdatasystem.org/feedback/>

# Thank You!

## Texas Student Data System

Texas Student Data System

District Connections Database

Reference Documents

Upcoming Events

F.A.Q.

Provide Feedback

The Texas Student Data System (TSDS) will provide educators and policymakers with actionable, timely data to improve student performance while easing the burden of data collection on districts.

Full deployment of the TSDS solution will occur over the next 5 years. This Web site was created as a tool to help education stakeholders stay apprised of the latest information about TSDS, participate in forums and webinars, access presentations and materials, and provide valuable feedback to the project team.



[www.TexasStudentDataSystem.org](http://www.TexasStudentDataSystem.org)