



TSDS Core Collections

AGENDA



■ TSDS Core Collections

- Charter School Waitlist
- Class Roster
- Early Childhood Data System
- Residential Facility Tracker
- Special Education Language Acquisition
- State Performance Plan Indicator 14



Charter School Waitlist (CSW)

AGENDA

■ Charter School Waitlist

- 2021-2022
 - Reminders
 - Report Updates
 - Business Rule Updates
 - Code Table Updates
- Current Known Issues
- Timeline
- Technical Resources

AGENDA

- Charter School Waitlist
 - **2021-2022**
 - Reminders
 - Report Updates
 - Business Rule Updates
 - Code Table Updates
 - Current Known Issues
 - Timeline
 - Technical Resources

2021-2022 REMINDERS

- All open-enrollment charter schools **must complete the CSW collection**. If they are not at capacity and **do not have a waitlist**, they still **must submit** the following Education Organization data:
 - E1674 NUMBER-CHARTER-STUDENTS-ENROLLED
 - E1675 CHARTER-EDUCATIONAL-ENROLLMENT-CAPACITY
 - E1676 CHARTER-ADMISSION-WAITLIST-INDICATOR-CODE
- Only **new students** applying to a charter school need to complete the **Charter Student Admission Application**. Typically, charter schools use a different form for returning students.
- Students on the waitlist who do not currently have a Unique ID should be assigned a UID. Every effort should be made to **determine if the student has an existing UID**.
- If the **Ethnicity** and **Ethnicity/Race codes** are **not known** for a waitlist student, the Charter campus personnel will need to use the '**TEA Use Only**' value field in the Unique ID system when obtaining a Unique ID.

2021-2022: REPORT UPDATES

- **CSW Roster Report: CSW0-100-001 :**
 - A PDF version of the report will be developed for the ESC level and will be available in the **September 10, 2021** release.

2021-2022: BUSINESS RULE UPDATES

- 2021-2022
 - No New Business Rules
 - No Updated Business Rules
 - No Deleted Business Rules

2021-2022: CODE TABLE UPDATES

- 2021-2022
 - No New Code Tables
 - No Updated Code Tables
 - No Deleted Code Tables

AGENDA

- Charter School Waitlist
 - 2021-2022
 - Reminders
 - Report Updates
 - Business Rule Updates
 - Code Table Updates
 - **Current Known Issues**
 - Timeline
 - Technical Resources

CURRENT KNOWN ISSUES

■ CSW Roster Report: CSW0-100-001:

- The CSV version of the report is currently displaying a redundant row of data at the end of each campus that includes:
 - Enrollment Capacity
 - # of Charter Students Enrolled
 - Charter Admission Waitlist Indicator data
- When the 'All' or 'Without Waitlist' parameter is selected for the PDF version of the CSW Roster report, campuses that do not have students on the waitlist are not displaying.
- The above issues are scheduled to be addressed in the **September 10, 2021** release.

AGENDA

- Charter School Waitlist
 - 2021-2022
 - Reminders
 - Report Updates
 - Business Rule Updates
 - Code Table Updates
 - Current Known Issues
 - **Timeline**
 - Technical Resources

TIMELINE: 2021-2022

Submission Due: October 29, 2021

Charter School Waitlist Collection

TSDS ready to load data to eDM	August 2, 2021
Charter School Waitlist ready for users to promote data	September 13, 2021
Charter School Waitlist ready for users to complete	September 24, 2021
Charter School Waitlist snapshot date Last Friday in September	September 24, 2021
Charter School Waitlist Submission due date for charter schools	October 29, 2021

AGENDA

- Charter School Waitlist
 - 2021-2022 Changes
 - Reminders
 - Application Updates
 - Report Updates
 - Business Rule Updates
 - Code Table Updates
 - Current Known Issues
 - Timeline
 - **Technical Resources**

TECHNICAL RESOURCES

- **Technical Specifications:**
 - [Texas Education Data Standards \(TEDS\)](#)
- **Technical Support:**
 - TSDSCustomerSupport@tea.texas.gov
- **CSW Program Area:**
 - [Charter School Authorizing and Administration Division](#)
 - charterschools@tea.texas.gov
- **CSAA (Charter Student Admission Application) waitlist form:**
 - [Charter Student Admission Application \(CSAA\).](#)
- **Knowledge Base Articles:**
 - [TSDSKB-606](#) *TEAL: TEAL Roles for Core Collections*
 - [TSDSKB-613](#) *CSW: Charter School Waitlist - FAQs*

TEA

Questions

tsds





Class Roster

AGENDA

■ Class Roster

- Program Area Updates & Guidance
- 2021-2022
 - Data Element Updates
 - Report Updates
 - Business Rule Updates
 - Code Table Updates
- Timeline
- Frequently Asked Questions
- Technical Resources

AGENDA

- **Class Roster**
 - **Program Area Updates & Guidance**
 - **2021-2022**
 - Data Element Updates
 - Report Updates
 - Business Rule Updates
 - Code Table Updates
 - **Timeline**
 - **Frequently Asked Questions**
 - **Technical Resources**

PROGRAM AREA UPDATES & GUIDANCE

- Teacher Incentive Allotment (TIA) Program Area
 - Grace Wu, Director of Strategic Compensation
 - Lyra Swinney, Project Coordinator

PROGRAM AREA UPDATES & GUIDANCE

- Spirit of legislation: reward highly effective teachers, incentivize highly effective teachers to work with **students** at high needs and rural campuses.
- Once a teacher is designated, TEA must have an automated method to determine eligibility, placement, and position **annually**.
- Commissioner rules for eligibility:
 - 087 Teacher in Winter Class Roster
 - Creditable year of service
- Statute: Allotment funding calculated based on campus of employment and designation level.

- Teacher Incentive Allotment (TIA) allows highly effective teachers to earn a designation, which is displayed on their teaching certificate.
- Teachers can earn a designation through either an approved LEA designation system or by achieving National Board certification.
- Do the new data elements apply to your LEA?
 1. Yes, if your LEA already has or will have an approved designation system.
 2. Yes, if your LEA employs a National Board-Certified Teacher (NBCT) or hired a teacher with a designation from another LEA.

PROGRAM AREA UPDATES & GUIDANCE

- How will LEAs identify designated teachers and National Board-Certified teachers (NBCTs)?
 - Check certificates for all new hires; designations are displayed in the top right corner of the virtual certificate
 - Starting this fall, ECOS will add teacher designations and expiry dates as optional fields in certification reports.
 - Search the National Board-Certified Teacher directory
 - For LEAs with designation systems, track teachers submitted for a new designation in Fall 2021
- The TIA program team will monitor designated teacher movement and notify LEAs in February once Fall PEIMS data is available.
- LEAs will only report designated teachers or NBCTs in Class Roster if they are still employed as a teacher.

2021-2022

- Report designated teachers in an atypical teaching position using the TeacherSchoolAssociation.
- Report centrally assigned designated teaching using a campus ending in “999”.
- TEA can automatically verify creditable year of service through a new data element CREDITABLE-YEAR-OF-SERVICE-INDICATOR-CODE.
- LEAs can track their designated teachers through a new data element TEACHER-INCENTIVE-ALLOTMENT-DESIGNATION-CODE.
- LEAs only report designated staff if reported as an 087 in the Winter Class Roster collection.

AGENDA

■ Class Roster

- Program Area Updates & Guidance
- **2021-2022**
 - Data Element Updates
 - Report Updates
 - Business Rule Updates
 - Code Table Updates
- Timeline
- Frequently Asked Questions
- Technical Resources

2021-2022: DATA ELEMENT UPDATES

Expansion of Teacher Incentive Allotment in the Class Roster Winter Collection:

- For the Class Roster Winter Submission, TEA activated a former Texas Student Data System (TSDS) dashboard only complex type, **TeacherSchoolAssociation** to allow an LEA to report a TIA designated teacher in Class Roster Winter without a TeacherSectionAssociation.
- TEA has added two new data elements to the StaffExtension complex type:
 - **CREDITABLE-YEAR-OF-SERVICE-INDICATOR-CODE** (E1721)
 - **TEACHER-INCENTIVE-ALLOTMENT-DESIGNATION-CODE** (E1722),
- TEA has added one new code table to be reported only for TIA designated teachers:
 - **TEACHER-INCENTIVE-ALLOTMENT-DESIGNATION-CODE** (DC165)

2021-2022: DATA ELEMENT UPDATES

- Added Complex Type: 30310-Staff Association
 - TeacherSchoolAssociation (InterchangeStaffAssociationExtension)
 - E1524 TX-UNIQUE-STAFF-ID
 - E0266 CAMPUS-ID
- Only report TeacherSchoolAssociation for TIA designated or National Board-Certified teachers without a TeacherSchoolAssociation.

2021-2022: DATA ELEMENT UPDATES

- Updates to Complex Type: 30040-Staff Basic Information
 - StaffExtension
 - E1721 CREDITABLE-YEAR-OF-SERVICE-INDICATOR-CODE
 - E1722 TEACHER-INCENTIVE-ALLOTMENT-DESIGNATION-CODE

- Only report E1721 and E1722 for TIA designated or National Board-Certified teachers.

- There can be multiple TEACHER-INCENTIVE-ALLOTMENT-DESIGNATION-CODEs (E1722) reported for a teacher.

- Example:

Mr. Noble (Role ID 087) has been employed by Learning ISD for a CREDITABLE-YEAR-OF-SERVICE and holds an active Exemplary designation for the Teacher Incentive Allotment. Learning ISD has submitted Mr. Noble for a Master designation.

Since Mr. Noble already holds one designation and has been submitted for a new designation, the LEA will report both the designation held and that Mr. Noble has been submitted for a new designation.

```
<StaffExtension>
```

```
.....
```

```
  <TX-CreditableYearOfServiceIndicator>1</TX-CreditableYearOfServiceIndicator>
```

```
    <TX-TeacherIncentiveAllotmentDesignation>
```

```
      <TX-TeacherIncentiveAllotmentDesignationCode>Active Teacher Incentive Allotment Designation</TX-TeacherIncentiveAllotmentDesignationCode>
```

```
      <TX-TeacherIncentiveAllotmentDesignationCode>LEA Submitted Designation Pending</TX-TeacherIncentiveAllotmentDesignationCode>
```

```
    </TX-TeacherIncentiveAllotmentDesignation>
```

```
</StaffExtension>
```

2021-2022: REPORT UPDATES

- The following Winter submission reports will be updated:
 - **CLS2-100-005 Staff Roster**
 - Added new data elements E1721 CREDITABLE-YEAR-OF-SERVICE-INDICATOR-CODE and E1722 TEACHER-INCENTIVE-ALLOTMENT-DESIGNATION-CODE to this report as new columns on the far right.
 - **CLS2-100-006 Submission Summary Report**
 - Add new subcategory 30310 Staff Association to the Staff Rows section of the report.

2021-2022: REPORT UPDATES

- Added a new Report for Winter submission:
 - **CLS2-100-007** report will display the following data for TIA designated staff.
 - The report will be at the **LEA/Campus level** and include the following data elements:
 - Teacher Name
 - Unique ID
 - Staff ID
 - Sex
 - Ethnicity/Race
 - Date of Birth
 - Campus ID
 - Designation Code (could have multiple codes)
 - Creditable Year of Service

2021-2022: BUSINESS RULE UPDATES

■ 2021-2022 New Staff Basic Validation Rules

Rule Type	Rule #	Rule Text / Business Meaning	Error Level	TSDS	PEIMS Sub	Rule Applies To			
						ESC	LEA	Campus	Charter
Business Context	30040-0054	If TEACHER-INCENTIVE-ALLOTMENT-DESIGNATION-CODE is not reported, then Teacher Class Assignment (Teacher Section Association) data must be reported with a matching TX-UNIQUE-STAFF-ID.	F	Y			Y		Y
		Teachers that are not designated with TEACHER-INCENTIVE-ALLOTMENT-DESIGNATION-CODE must be reported with teacher class assignment (teacher section association) data for the Class Roster Winter Submission.							

Rule Type	Rule #	Rule Text / Business Meaning	Error Level	TSDS	PEIMS Sub	Rule Applies To			
						ESC	LEA	Campus	Charter
Business Context	30040-0055	If TEACHER-INCENTIVE-ALLOTMENT-DESIGNATION-CODE is reported, then there must be a Teacher School Association or a Teacher Section Association with a matching TX-UNIQUE-STAFF-ID.	F	Y			Y		Y
		Teachers identified as Active National Board Certified, designated, or pending new or change of designation must be reported with Teacher School Association or Teacher Section Association data to generate allotment funding.							

2021-2022: BUSINESS RULE UPDATES

■ 2021-2022 New Staff Basic Validation Rules

Rule Type	Rule #	Rule Text / Business Meaning	Error Level	TSDS	PEIMS Sub	Rule Applies To			
						ESC	LEA	Campus	Charter
Business Context	30040-0056	If TEACHER-INCENTIVE-ALLOTMENT-DESIGNATION-CODE is not reported, then there must not be a Teacher School Association reported for this TX-UNIQUE-STAFF-ID.	F	Y			Y		Y
		The Teacher School Association data must only be reported for teachers who are Active National Board Certified, designated, or pending new or change of designation to generate allotment funding.							

Rule Type	Rule #	Rule Text / Business Meaning	Error Level	TSDS	PEIMS Sub	Rule Applies To			
						ESC	LEA	Campus	Charter
Business Context	30040-0058	If at least one TEACHER-INCENTIVE-ALLOTMENT-DESIGNATION-CODE is reported for a staff person, then CREDITABLE-YEAR-OF-SERVICE-INDICATOR-CODE must not be blank.	F	Y			Y		Y
		TX-CreditableYearOfServiceIndicator must be reported for all teachers with a TX-TeacherIncentiveAllotmentDesignationCode.							

2021-2022: BUSINESS RULE UPDATES

■ 2021-2022 New Teacher Class Assignment Validation Rules

Rule Type	Rule #	Rule Text / Business Meaning	Error Level	TSDS	PEIMS Sub	Rule Applies To			
						ESC	LEA	Campus	Charter
Business Context	30305-0027	If ROLE-ID is "047", then TEACHER-INCENTIVE-ALLOTMENT-DESIGNATION-CODE and CREDITABLE-YEAR-OF-SERVICE-INDICATOR-CODE must not be reported.	F	Y			Y		Y
		Any staff member reported as a substitute teacher must not be reported with TX-TeacherIncentiveAllotmentDesignationCode or TX-CreditableYearOfServiceIndicator on StaffExtension.							

Rule Type	Rule #	Rule Text / Business Meaning	Error Level	TSDS	PEIMS Sub	Rule Applies To			
						ESC	LEA	Campus	Charter
Business Context	30305-0028	For the Class Roster collection, if both Teacher School Association and Teacher Section Association data are reported with matching TX-UNIQUE-STAFF-ID but different CAMPUS-ID values, then a special warning message will be displayed asking for verification of this teacher's assignments.	S	Y			Y		Y
		Teachers reported for the Class Roster collection with both Teacher School Association and Teacher Section Association data at different campuses should have their assignment data verified.							

2021-2022: BUSINESS RULE UPDATES

■ 2021-2022 New Staff Association Validation Rules

Rule Type	Rule #	Rule Text / Business Meaning	Error Level	TSDS	PEIMS Sub	Rule Applies To			
						ESC	LEA	Campus	Charter
Business Context	30310-0001	For a Teacher School Association, there must be a staff person with a matching TX-UNIQUE-STAFF-ID and at least one TEACHER-INCENTIVE-ALLOTMENT-DESIGNATION-CODE.	F	Y			Y		Y
		For a Teacher School Association reported, there must be corresponding staff data reported as eligible for the Teacher Incentive Allotment.							

Rule Type	Rule #	Rule Text / Business Meaning	Error Level	TSDS	PEIMS Sub	Rule Applies To			
						ESC	LEA	Campus	Charter
Business Context	30310-0002	CAMPUS-ID must match an entry registered with the TEA as an active instructional campus in the reporting LEA ending in "001"-"698", or match an entry registered with the TEA as a financial campus ending in "999".	F	Y			Y		Y
		For a Teacher School Association, StateOrganizationId must be registered with the TEA as an active instructional campus in the reporting LEA ending in "001"-"698", or a financial campus ending in "999".							

2021-2022: BUSINESS RULE UPDATES

■ 2021-2022 New Staff Association Validation Rules

Rule Type	Rule #	Rule Text / Business Meaning	Error Level	TSDS	PEIMS Sub	Rule Applies To			
						ESC	LEA	Campus	Charter
Business Context	30310-0003	If the last three characters of CAMPUS-ID are "999" for a Teacher School Association reported for the Class Roster collection, then there should not be another Teacher School Association reported with a matching TX-UNIQUE-STAFF-ID where the last three characters are CAMPUS-ID are not "999".	S	Y			Y		Y
		If a teacher is centrally assigned (home bound, hospital class, off-home campus) with CAMPUS-ID ending in "999", they are generally not also assigned to a CAMPUS-ID that does not end in "999". Verify the Teacher School Association data for this teacher.							

Rule Type	Rule #	Rule Text / Business Meaning	Error Level	TSDS	PEIMS Sub	Rule Applies To			
						ESC	LEA	Campus	Charter
Field Validation	30310-000D	The combination of the following fields must be unique for each Teacher School Association: TX-UNIQUE-STAFF-ID and CAMPUS-ID.	F	Y			Y	Y	Y
		The combination of the following fields must be unique for each Teacher School Association: StaffUniqueStateld and StateOrganizationId.							

2021-2022: CODE TABLE UPDATES

- 2021-2022 New Code Table
 - DC 165 – TEACHER-INCENTIVE-ALLOTMENT-DESIGNATION-CODE

Code Table Id	Name	XML Name	Date Issued	Date Updated
DC165	TEACHER-INCENTIVE-ALLOTMENT-DESIGNATION-CODE	TX-TeacherIncentiveAllotmentDesignation	03/01/2021	
Code	Translation			
01	Active National Board Certified Teacher			
02	Active Teacher Incentive Allotment Designation			
03	LEA Submitted Designation Pending			
	NOTE: Active Teacher Incentive Allotment Designation – indicates a teacher holds an active Recognized, Exemplary, or Master Designation LEA Submitted Designation Pending – indicates a teacher has been submitted for a new or change of current designation			

AGENDA

■ Class Roster

- Program Area Updates & Guidance
 - 2020-2021
 - Submission Updates
 - 2021-2022
 - Data Element Updates
 - Report Updates
 - Business Rule Updates
 - Code Table Updates
- **Timeline**
- Frequently Asked Questions
- Technical Resources

TIMELINE: 2021-2022 FALL

Fall Submission Due: October 21, 2021

Class Roster Collection – Fall Submission	
TSDS ready to load data to eDM	August 2, 2021
Class Roster Fall ready for users to promote data	September 13, 2021
Class Roster Fall snapshot date Last Friday in September	September 24, 2021
Class Roster Fall ready for users to complete	September 24, 2021
Class Roster Fall submission due date for LEAs	October 21, 2021

TIMELINE: 2021-2022 WINTER

Winter Submission Due: March 31, 2022

Class Roster Collection – Winter Submission	
TSDS ready to load data to eDM	August 2, 2021
Class Roster Winter ready for users to promote data	January 31, 2022
Class Roster Winter snapshot date Last Friday in February	February 25, 2022
Class Roster Winter ready for users to complete	February 25, 2022
Class Roster Winter submission due date for LEAs	March 31, 2022

AGENDA

■ Class Roster

- Program Area Updates & Guidance
- 2021-2022
 - Data Element Updates
 - Report Updates
 - Business Rule Updates
 - Code Table Updates
- Timeline
- **Frequently Asked Questions**
- Technical Resources

FREQUENTLY ASKED QUESTIONS

On the TeacherSchoolAssociation complex type, does an LEA need to send information about the classes the teacher is teaching?

An LEA will only report the Staff Unique ID and Campus ID on the TeacherSchoolAssociation.

FREQUENTLY ASKED QUESTIONS

Will LEAs submit TeacherSchoolAssociation complex type in the Class Roster Fall submission?

No, this complex type will only be submitted in the Class Roster Winter submission for TIA designated teachers that are not reported on TeacherSectionAssociation complex types.

FREQUENTLY ASKED QUESTIONS

Can an LEA report both teacher school association and teacher section association data, for the same teacher, with a TIA designation?

The guidance in TEDS is to only report the teacher school association if there is not a teacher section association for the teacher (role id 087). However, there will not be a fatal stopping the LEAs from reporting both.

If the campus IDs are different from the teacher school association data and the teacher section association data, there will be a special warning issued asking the LEA to verify that the data is correct.

Only the teacher school association data will be promoted for those teachers that have at least one teacher incentive allotment designation code (E1722).

AGENDA

■ Class Roster

- Program Area Updates & Guidance
- 2021-2022
 - Data Element Updates
 - Report Updates
 - Business Rule Updates
 - Code Table Updates
- Timeline
- Frequently Asked Questions
- **Technical Resources**

TECHNICAL RESOURCES

- **Technical Specifications:**
 - [Texas Education Data Standards \(TEDS\)](#)

- **Technical Support:**
 - TSDSCustomerSupport@tea.texas.gov

- **TIA Program Area:**
 - tia@tea.texas.gov

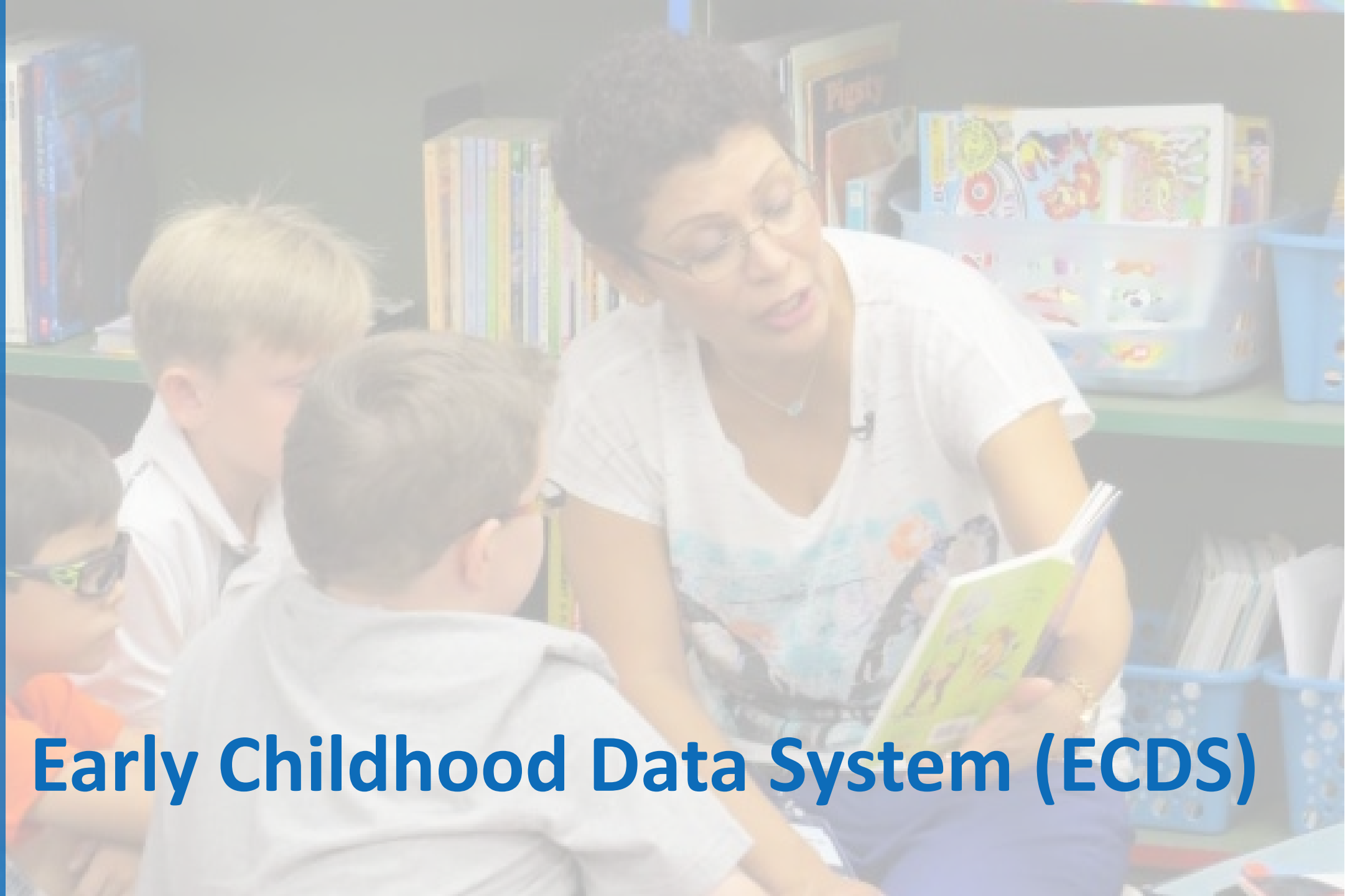
- **Knowledge Base Articles:**
 - [TSDSKB-587](#) *General FAQs for Class Roster Collection*

TEA

Questions

tsds





Early Childhood Data System (ECDS)

AGENDA

■ Early Childhood Data System

- Program Area Updates & Guidance
 - 2020-2021
 - Submission Counts
 - 2021-2022
 - Reminders
 - Business Rule Updates
 - Code Table Updates
 - Report Updates
- Current Known Issues
- Timeline
- Technical Resources

PROGRAM AREA UPDATES & GUIDANCE

■ Early Learning Partnerships

- Early learning partnerships are formal **collaborations between** local education agencies (**LEAs**) such as school districts or open-enrollment charters, and **private early learning centers (ELCs) or Head Start centers**.
- The resulting partnership **allows an LEA to dual enroll children and provide** prekindergarten and/or additional comprehensive, **wrap-around services**.
- Partnerships **benefit** a wide range of stakeholders including, **families and children, LEAs, ELCs, and the Early Childhood community**.

PROGRAM AREA UPDATES & GUIDANCE

- **Reporting Public Pre-K Partnerships in ECDS Pre-K submission:**
 - **PK-SCHOOL-TYPE (E1555)** indicates the PK program offered at the campus.
 - PK-SCHOOL-TYPE is reported as part of the ECDS collection and applies to a **campus/course/section** and is only reported for course sections that utilize the Pre-Kindergarten SERVICE-ID “**01010000**” (Pre-Kindergarten).
 - LEAs that administer a partnership with a Head Start program or licensed child care provider would report one of the **highlighted codes**:

Code Table Id	Name	XML Name	Date Issued	Date Updated
DC152	PK-SCHOOL-TYPE	TX-PKSchoolType	03/03/201	3/1/2020
Code	Translation			
01	Non-Public Pre-K Head Start			
02	Public Pre-K			
05	Non-Public Pre-K Licensed Child Care			
07	Public Pre-K Head Start			
08	Public Pre-K Licensed Child Care			
10	Non-Public Pre-K			
11	In-District Charter Partnership			
99	Other			

AGENDA



■ Early Childhood Data System

- Program Area Updates & Guidance
- **2020-2021**
 - Submission Counts
- 2021-2022
 - Reminders
 - Business Rule Updates
 - Code Table Updates
 - Report Updates
- Current Known Issues
- Timeline
- Frequently Asked Questions
- Technical Resources

2020-2021: SUBMISSION COUNTS

- The 2020-2021 ECDS Prekindergarten submission closed on **June 24, 2021**.

Final Status Count:

Public Pre-K Completed: **1,068**

Private Pre-K Completed: **2**

AGENDA

■ Early Childhood Data System

- Program Area Updates & Guidance
- 2020-2021
 - Submission Counts
- **2021-2022**
 - Reminders
 - Business Rule Updates
 - Code Table Updates
 - Report Updates
- Current Known Issues
- Timeline
- Technical Resources

2021-2022: REMINDERS

■ ECDS Kindergarten Assessments:

- TEA is continuing to work with the kindergarten assessment vendors for **TX-KEA** and **mCLASS Texas Edition** to improve the process for providing the results directly to TEA in 2021-2022.
- Stay tuned for further information and guidance in upcoming FCN communications.

■ ECDS Prekindergarten Assessments:

- The prekindergarten process will remain the same for 2021-2022 as it was for 2020-2021.
- LEAs are expected to obtain their assessment results directly from their ECDS vendor and are responsible for loading their assessment data into the ODS.
- Prekindergarten assessment results will NOT be provided directly to TEA.

2021-2022: REMINDERS

- **-999 (Not Assessed) Score result:**
 - Due to analysis and feedback received from LEAs and ECDS assessment vendors regarding difficulties associated with the -999 (Not Assessed) score and the associated assessment administration date, it was decided by the Early Childhood Program area that the -999 score will no longer be required for LEAs to submit in the 2021-2022 school year.

2021-2022: BUSINESS RULE UPDATES

■ 2021-2022 New Validation Rule

Rule Type	Rule #	Rule Text / Business Meaning	Error Level	TSDS	PEIMS Sub	Rule Applies To			
						ESC	LEA	Campus	Charter
Business Context	30040-0057	If PK-TEACHER-REQUIREMENT is not blank, then this staff person must/should have a Teacher Section Association with a CLASSROOM-POSITION of "Teacher of Record" for a Course Section where HIGH-QUALITY-PK-PROGRAM-INDICATOR is "1".	SW	Y			Y		Y
		A staff person with a TX-PKTeacherRequirement must/should be reported as Teacher of Record for a High Quality PK program course.							

2021-2022: BUSINESS RULE UPDATES

■ 2021-2022 Updated Validation Rule

Rule Type	Rule #	Rule Text / Business Meaning	Error Level	TSDS	PEIMS Sub	Rule Applies To			
						ESC	LEA	Campus	Charter
Business Context	46010-0005	If REPORT-ASSESSMENT-TYPE is "ECDS - PK" or "ECDS - KG", then for the reported ASSESSMENT-TITLE and ACADEMIC-SUBJECT, if there is a minimum score and maximum score defined in TEDS DC154 Code Table Assessment Specifications, then the SCORE-RESULT must be either -999, or greater than or equal to the score minimum and less than or equal to the score maximum.	F	Y			Y		Y
		For a PK or KG Student Assessment collected for the ECDS, the Result must be either not assessed (-999), or within the allowed score range for the AssessmentTitle and AcademicSubject.							

2021-2022: CODE TABLE UPDATES

DC 154 – ASSESSMENT-TITLE-CODE

■ 2021-2022

Code	Translation	Assessment Identification Code	Academic Subjects with Min/Max scores					
			EL-R	EL-W	L&C	H&W		Math
	KG Assessments							
01	BOY KG TX-KEA English	TX-KEA-E	54-122	0-15	38-129	0-22		0-16
02	BOY KG TX-KEA Spanish	TX-KEA-S	41-124	0-19	48-131	0-22		0-13
14	BOY KG mCLASS TX Assessment	M-CLS-E						
86	BOY PK mCLASS TX Assessment and EOY PK EL - Early Reading English	M-CLS-S EOY-E						
	For more information about ECDS Assessments, including Required for KG Readiness, Lowest Ready Score, and Composite Scores, refer to the: 2020-2021 ECDS Assessment Specifications							

- The 'ECDS NOT ASSESSED GUIDANCE CHART' will be removed from the 2021-2022 Assessment Specifications since LEAs will no longer be required to report a -999 score value to indicate a student that was 'Not Assessed'.

ECDS NOT ASSESSED GUIDANCE CHART		
KINDERGARTEN		
ITEM	SCENARIO	ENTER A -999 SCORE RESULT?
1	KG student is enrolled in a student section on the day the BOY KG assessment is administered, but did not take the test for whatever reason (Ex: Absent, Opted out by parent, etc.)	YES
2	KG student enrolls in a student section but withdraws before he takes the BOY KG assessment	NO
3	KG student enrolls in a student section after the BOY KG assessment is administered	NO
PRE-KINDERGARTEN		
ITEM	SCENARIO	ENTER A -999 SCORE RESULT?
1	PK student is enrolled in a student section on the day the BOY PK assessment is administered but, did not take the test for whatever reason (Ex: Absent, Opted out by parent, etc.)	YES
2	PK student enrolls in a student section but withdraws before he takes the BOY PK assessment	NO
3	PK student is enrolled in a student section on the day the EOY PK assessment is administered, but did not take the test for whatever reason (Ex: Absent, Opted out by parent, etc.)	YES
4	PK student enrolls in a student section but withdraws before he takes the BOY PK assessment	NO
5	PK student enrolls in a student section but withdraws before he takes the EOY PK assessment	NO
6	PK student enrolls in a student section after the BOY PK assessment is administered	NO
7	PK student enrolls in a student section after the EOY PK assessment is administered	NO

2021-2022: REPORT UPDATES

- **ECD0-000-010:** The ‘# HQ PK Classes’ column has been added to the report to allow ESCs to compare against the High-Quality PK components that are reported by LEAs in their region.

Texas Education Agency
ECD0-000-010
vnn.n.n

TSDS EARLY CHILDHOOD HIGH QUALITY PK COMPONENTS COMPLETION
ESC-level Data | Public Prekindergarten
2021-2022 Prekindergarten

Monday 11/1/2019 2:41PM
Page n of n

ESC: 999999 - <Region Name>

LEA	LEA ID	# HQ PK Classes	PK Curricula Data Submitted	Additional PK Teacher Qualification						PK Program Evaluation			Student		
				# of Certs Accredited by AMI or MACTE	8+ Yrs Exp Teaching a Nationally Accredited CCP	Employed as a PK Teacher in an LEA	Degree in ECE	CDA Credential	TSR Training Program	None	TEA Self- Assmnt Tool	Other	BOY PK	EOY PK	Fam Engage Link
<LEA Name>	057816	###	#,###	###	###	###	###	###	###	###	###	###	###	###	Y
<LEA Name>	057829	###	#,###	###	###	###	###	###	###	###	###	###	###	###	N
<LEA Name>	101871	###	#,###	###	###	###	###	###	###	###	###	###	###	###	Y
<LEA Name>	109901	###	#,###	###	###	###	###	###	###	###	###	###	###	###	N
<LEA Name>	095901	###	#,###	###	###	###	###	###	###	###	###	###	###	###	Y

2021-2022: REPORT UPDATES

- The following reports have been impacted by the -999 score result no longer being classified as 'Not Assessed':
 - -999 assessment score value will no longer display as 'Not Assessed':
 - **ECD0-000-004 Early Childhood KG Data Submission**
 - **ECD0-000-006 Early Childhood PK Data Submission**
 - -999 assessment score will no longer be excluded from the KG Readiness calculations:
 - **ECD0-000-001 Early Childhood Assessment Completion**
 - **ECD0-000-002 Early Childhood Assessment Summary**
 - **ECD0-000-003 Early Childhood Assessment With PK Sources**
 - If a -999-assessment score value is submitted for a student, the above reports will now include the score in the KG Readiness calculations based on the proficiency ranges in the Assessment Specifications.
 - -999 assessment score value will no longer be excluded from the Assessment Totals:
 - **ECD0-000-007 Early Childhood PRE-K Completion**
 - **ECD0-000-008 Early Childhood PK Proficiency Summary**
 - **ECD0-000-009 Early Childhood Public PK Missing Assessment Data**

2021-2022: REPORT UPDATES

2020-2021 Example:

Texas Education Agency
ECD0-000-006
v21.1.2
*** CONFIDENTIAL ***
LEA: 701603 - SEDS LEARNING ISD

TSDS EARLY CHILDHOOD PK DATA SUBMISSION
LEA-level Data | Public
Campuses: All Campuses
2020 - 2021 Prekindergarten

Wednesday 05/26/2021 4:28 PM
Page 1 of 3

ORGANIZATION-CATEGORY: Local Education Agency CAMPUS GRADES OFFERED: Prekindergarten ORGANIZATION CATEGORY: School
Status: N/A

Campus: 701603003 - LEARNING ELEMENTARY SCHOOL

STUDENT DATA

Name	UID	Sex	DOB	Hisp/Latino	Race	LEP Prgm	Econ Dis	Special Ed	Primary Fd	Secondary Fd				
STUDENT PK DATA			COURSE SECTION INFORMATION					TEACHER DATA						
School/Program Type	Assessment Title*	Academic Subject	Admin Dt	Raw Score/Percentile**	Student Instr Type	Class ID	# Days in Class	PK Cur. Cd.	PK Program Type	Program Eval Type	Home Rm Indicator	PK Tchr Req	Teacher Name	UID
SAMPLE,STUDENT	0123456789	Male	07/16/2016	TRUE	W	L	No	Special Education	1	9				
Public Pre-K Head Start					FULL	000000000PK102	274	99	01	00	1		SAMPLE, TEACER	XXXXXX2528
	BOY PK DIAL-4 English	HW	09/10/20	01.00										
	BOY PK DIAL-4 English	LC	09/10/20	Not Assessed										
Total Days in a PK Program							274							
Student in HQ Program >= 112 days							No							

2021-2022 Example:

Texas Education Agency
ECD0-000-006
v21.1.2
*** CONFIDENTIAL ***
LEA: 701603 - SEDS LEARNING ISD

TSDS EARLY CHILDHOOD PK DATA SUBMISSION
LEA-level Data | Public
Campuses: All Campuses
2021 - 2022 Prekindergarten

Wednesday 05/26/2022 4:28 PM
Page 1 of 3

ORGANIZATION-CATEGORY: Local Education Agency CAMPUS GRADES OFFERED: Prekindergarten ORGANIZATION CATEGORY: School
Status: N/A

Campus: 701603003 - LEARNING ELEMENTARY SCHOOL

STUDENT DATA

Name	UID	Sex	DOB	Hisp/Latino	Race	LEP Prgm	Econ Dis	Special Ed	Primary Fd	Secondary Fd				
STUDENT PK DATA			COURSE SECTION INFORMATION					TEACHER DATA						
School/Program Type	Assessment Title*	Academic Subject	Admin Dt	Raw Score/Percentile**	Student Instr Type	Class ID	# Days in Class	PK Cur. Cd.	PK Program Type	Program Eval Type	Home Rm Indicator	PK Tchr Req	Teacher Name	UID
SAMPLE,STUDENT	0123456789	Male	07/16/2016	TRUE	W	L	No	Special Education	1	9				
Public Pre-K Head Start					FULL	000000000PK102	274	99	01	00	1		SAMPLE, TEACER	XXXXXX2528
	BOY PK DIAL-4 English	HW	09/10/20	01.00										
	BOY PK DIAL-4 English	LC	09/10/20	-999										
Total Days in a PK Program							274							
Student in HQ Program >= 112 days							No							

AGENDA



■ Early Childhood Data System

- Program Area Updates & Guidance
- 2020-2021
 - Submission Counts
- 2021-2022
 - Reminders
 - Business Rule Updates
 - Code Table Updates
 - Report Updates
- **Current Known Issues**
- Timeline
- Technical Resources

CURRENT KNOWN ISSUES

- The following report issues will be resolved in the **November 5, 2021** release:
 - **ECDS Kindergarten Reports:**
 - **ECD0-000-001**
 - Classroom positions, other than the Teacher of Record, are displaying on the report.
 - Campus ID and campus name are not matching in the report details section.
 - **ECD0-000-005:**
 - The report is listing students as missing assessments, even though those subject areas are not part of the required domain for KG readiness.
 - **ECD0-000-006**
 - The PDF and CSV version of this report for prior years is failing after running for an extended amount of time.
 - **ECDS Prekindergarten Reports:**
 - **ECD0-000-003**
 - The report is incorrectly displaying the number of High-Quality PK students for those students that have exited and re-entered the same course/section.

CURRENT KNOWN ISSUES

- The following rule issues will be resolved in the **November 5, 2021** release:
 - The rule text is incorrectly displaying extra symbols and characters for the following ECDS rules:
 - 10010-0015
 - 10010-0016
 - 46010-0005

AGENDA

■ Early Childhood Data System

- Program Area Updates & Guidance
- 2020-2021
 - Submission Counts
- 2021-2022
 - Reminders
 - Business Rule Updates
 - Code Table Updates
 - Report Updates
- Current Known Issues
- **Timeline**
- Technical Resources

TIMELINE: 2021-2022 KINDERGARTEN

Submission Due: January 27, 2022

Early Childhood Data System Collection (ECDS) - KG

TSDS ready to load data to eDM	August 2, 2021
ECDS Kindergarten ready for users to promote data	November 8, 2021
ECDS Kindergarten submission due date for LEAs	January 27, 2022

TIMELINE: 2021-2022 PREKINDERGARTEN

Submission Due: June 23, 2022

Early Childhood Data System Collection (ECDS) - KG

TSDS ready to load data to eDM	August 2, 2021
ECDS Prekindergarten ready for users to promote data	November 8, 2021
Private Prekindergarten application deadline for BPD (Business Partner Directory) Org number	May 26, 2022
ECDS Prekindergarten submission due date for LEAs and Private Prekindergarten Organizations	June 23, 2022

AGENDA



■ Early Childhood Data System

- Program Area Updates & Guidance
- 2020-2021
 - Submission Counts
- 2021-2022
 - Reminders
 - Business Rule Updates
 - Code Table Updates
 - Report Updates
- Current Known Issues
- Timeline
- **Technical Resources**

TECHNICAL RESOURCES

- **Technical Specifications:**
 - [Texas Education Data Standards \(TEDS\)](#)

- **Technical Support:**
 - TSDSCustomerSupport@tea.texas.gov

- **ECDS Program Area:**
 - [Early Childhood Education Website](#)
 - [ECDS Quick Support Guide](#)

- **Knowledge Base Articles:**
 - [TSDSKB-249](#) *ECDS: General FAQs*
 - [TSDSKB-508](#) *ECDS: Assessment Specifications*

TECHNICAL RESOURCES

- **2021-2022 School Year Commissioner's List of Assessments:**
 - **Prekindergarten:**
 - [The Commissioner's List of Approved Prekindergarten Assessment Instruments is extended through the 2021-2022 school year.](#)
 - **Kindergarten:**
 - Local Education Agencies (LEAs) must conduct a **beginning of year (BOY)** literacy assessment using either **TX-KEA** or **mCLASS Texas Edition**.
 - The ECDS kindergarten submission will only accept BOY Kindergarten data from these two vendors.
 - Commissioner-selected literacy screening tools for kindergarten is through **July 2023**.
 - Districts and open enrollment charters can use either of these tools to conduct the required beginning-of-year literacy screening for the 2021-2022 and 2022-2023 school years.

TEA

Questions

tsds





Residential Facility Tracker

AGENDA

■ Residential Facility (RF) Tracker

- 2020-2021
 - Submission Updates
- 2021-2022
 - Application Updates
 - Report Updates
 - Business Rule Updates
 - Code Table Updates
- Timeline
- Technical Resources

AGENDA



- Residential Facility (RF) Tracker
 - **2020-2021**
 - Submission Updates
 - 2021-2022
 - Application Updates
 - Report Updates
 - Business Rule Updates
 - Code Table Updates
 - Timeline
 - Technical Resources

2020-2021: SUBMISSION UPDATES

- The 2020-2021 RF Tracker submission closed on **July 15, 2021.**

Final Status Count: 197

AGENDA

- Residential Facility (RF) Tracker
 - 2020-2021
 - Submission Updates
 - **2021-2022**
 - Application Updates
 - Report Updates
 - Business Rule Updates
 - Code Table Updates
 - Timeline
 - Frequently Asked Questions
 - Technical Resources

2021-2022: APPLICATION UPDATES

- TEA is looking into resolving the issue of students with ADA code 0 not being reported for the RF Tracker submission. Currently, the ADA code 0 students are not loaded into the ODS for the PEIMS Summer submission.
- Proposed changes for 2021-2022:
 - The RF Tracker students with ADA code 0 will need to be **loaded into the ODS** for the PEIMS Summer submission.
 - The PEIMS Summer promotion logic will be updated to not promote the RF Tracker students with no attendance.
 - Except for those students that have a **NON-MEMBERSHIP-DISCIPLINE-RESTRAINT-INDICATOR-CODE (E1725) equal to 1** on the DisciplineActionExtension complex type or the RestraintEventExtension complex type.

2021-2022: REPORT UPDATES

- **RFT0-100-004 Individual Student Summary Report** will be available in a CSV format.

Business Rule Updates

- 2021-2022
 - No New Business Rules
 - No Updated Business Rules
 - No Deleted Business Rules

Code Table Updates

- 2021-2022
 - No New Code Tables
 - No Updated Code Tables
 - No Deleted Code Tables

AGENDA

- Residential Facility (RF) Tracker

- 2020-2021

- Submission Updates

- 2021-2022

- Application Updates
 - Report Updates
 - Business Rule Updates
 - Code Table Updates

- **Timeline**

- Technical Resources

Submission Due: July 21, 2022

Residential Facility Tracker (RF Tracker) Collection

TSDS ready to load data to eDM	August 2, 2021
RF Tracker ready for users to promote data	September 13, 2021
All RF Tracker data up to this point must be promoted and validated. LEA will continue to report RF Tracker data as students enter and exit residential facilities or on a monthly basis throughout the school year	December 3, 2021
RF Tracker ready for users to complete	May 16, 2022
RF Tracker submission due date for LEAs	July 21, 2022

AGENDA

- Residential Facility (RF) Tracker
 - 2020-2021
 - Submission Updates
 - 2021-2022
 - Application Updates
 - Report Updates
 - Business Rule Updates
 - Code Table Updates
 - Timeline
 - **Technical Resources**

TECHNICAL RESOURCES

- Technical Specifications:
 - [TSDS Web-Enabled Data Standards](#)
- Technical Support:
 - TSDSCustomerSupport@tea.texas.gov
- RF Tracker Program Area:
 - ReviewandSupport@tea.texas.gov
- Knowledge Base Articles:
 - [TSDSKB-586](#) *General FAQs for RF Tracker Collection*
 - [TSDSKB-589](#) *Process for adding or updating the Residential Facilities*

TEA

Questions

tsds



A photograph of a female teacher with short dark hair and glasses, wearing a white t-shirt, sitting on the floor and reading a book to three young students. The students are also sitting on the floor, looking at the book. They are in a classroom setting with bookshelves filled with books and blue storage bins in the background. The image is slightly faded to allow the text overlay to be prominent.

Special Education Language Acquisition (SELA)

AGENDA

■ SELA

- 2020-2021
 - Submission Counts
- 2021-2022
 - Data Element Updates
 - Business Rule Updates
 - Code Table Updates
 - Report Updates
- Current Known Issues
- Timeline
- Technical Resources

AGENDA

■ SELA

■ 2020-2021

- Submission Counts

■ 2021-2022

- Data Element Updates
- Business Rule Updates
- Code Table Updates
- Report Updates

■ Current Known Issues

■ Timeline

■ Technical Resources

2020-2021: SUBMISSION COUNTS

- The 2020-2021 SELA submission closed on **June 24, 2021**.

Final Status Count:

Completed: 455

AGENDA

■ SELA

- 2020-2021
 - Submission Counts
- **2021-2022**
 - Data Element Updates
 - Business Rule Updates
 - Code Table Updates
 - Report Updates
- Current Known Issues
- Timeline
- Technical Resources

2021-2022: DATA ELEMENT UPDATES

- Disability complex type:
 - Added data element E1723 ELIGIBILITY-DATE.
 - Indicates the date upon which a student who is deaf or hard of hearing is **eligible for services**.
 - This data was collected in the 2020-2021 collection using element E1632 EFFECTIVE-DATE.
 - Changed E1632 EFFECTIVE-DATE from 'Optional' to 'Conditionally Mandatory'.
 - Indicates the date upon which the **disability** is considered to **take effect**.
 - This data element will NOT be promoted to the SELA data mart.

Element ID	Data Element	XML Name	TSDS
**	Disability	Disabilities	Y
E1632	EFFECTIVE-DATE	TX-EffectiveDateDisabilities	C
E1723	ELIGIBILITY-DATE	TX-EligibilityDateDisabilities	Y
E1220	DISABILITY	Disability	C

2021-2022: DATA ELEMENT UPDATES

- TX-LanguageAcquisitionServicesProvided complex type:
 - Changed **E1663 FREQUENCY-OF-SERVICES** and **E1664 HOURS-SPENT-RECEIVING-SERVICES** from 'Mandatory' to 'Optional'.
 - This will no longer require an LEA to report these elements for students that do not receive services.

Element ID	Data Element	XML Name	TSDS
**	TX-LanguageAcquisitionServicesProvided	TX-LanguageAcquisitionServicesProvided	Y
E1662	LANG-ACQ-SERVICES-PROVIDED	TX-LangAcqServicesProvided	C
E1663	FREQUENCY-OF-SERVICES	TX-FrequencyOfServices	Y
E1664	HOURS-SPENT-RECEIVING-SERVICES	TX-HoursSpentReceivingServices	Y

2021-2022: BUSINESS RULE UPDATES

■ 2021-2022 New Validation Rule

Rule Type	Rule #	Rule Text / Business Meaning	Error Level	TSDS	PEIMS Sub	Rule Applies To			
						ESC	LEA	Campus	Charter
Business Context	41163-0072	If LANG-ACQ-SERVICES-PROVIDED is "Direct" or "Indirect/Consultative", then FREQUENCY-OF-SERVICES and HOURS-SPENT-RECEIVING-SERVICES must be reported.	F	Y			Y		Y
		TX-FrequencyOfServices and TX-HoursSpentReceivingServices must be reported if TX-LangAcqServicesProvided is "Direct" or "Indirect/Consultative".							

2021-2022: BUSINESS RULE UPDATES

■ 2021-2022 Updated Validation Rules

- FREQUENCY-OF-SERVICES and HOURS-SPENT-RECEIVING-SERVICES are removed from rule 40100-0204 since data elements have been changed from **mandatory** to **optional**.

Rule Type	Rule #	Rule Text / Business Meaning	Error Level	TSDS	PEIMS Sub	Rule Applies To			
						ESC	LEA	Campus	Charter
Business Context	40100-0204	If age is less than 9 on September 1, and DISABILITY is "Deaf-Blindness (Deaf-Blind)" or "Hearing/Auditory Impairment (Auditory Impairment)", then there must be a Special Education program association reported with a matching TX-UNIQUE-STUDENT-ID, including INSTRUCTIONAL-SETTING-CODE, LANG-ACQ-SERVICES-PROVIDED, and PREFERRED-HOME-COMMUNICATION-METHOD.	F	Y			Y		Y
		Students less than nine years of age with the disabilities of "Deaf-Blindness (Deaf-Blind)" or "Hearing/Auditory Impairment (Auditory Impairment)" must be reported with Special Education program association Language Acquisition information, including TX-InstructionalSetting, TX-LangAcqServicesProvided, and TX-PreferredHomeCommunicationMethod.							

- EFFECTIVE-DATE (E1632) has been removed from rule 40100-0205 and **replaced** with ELIGIBILITY-DATE (E1723).

Rule Type	Rule #	Rule Text / Business Meaning	Error Level	TSDS	PEIMS Sub	Rule Applies To			
						ESC	LEA	Campus	Charter
Business Context	40100-0205	If age is less than 9 on September 1, and DISABILITY is "Deaf-Blindness (Deaf-Blind)" or "Hearing/Auditory Impairment (Auditory Impairment)", then ELIGIBILITY-DATE (TX-EligibilityDateDisabilities) must not be blank.	F	Y			Y		Y
		Students less than nine years of age with the disabilities of "Deaf-Blindness (Deaf-Blind)" or "Hearing/Auditory Impairment (Auditory Impairment)" must be reported with TX-EligibilityDateDisabilities.							

2021-2022: BUSINESS RULE UPDATES

■ 2021-2022 Updated Validation Rules

Rule Type	Rule #	Rule Text / Business Meaning	Error Level	TSDS	PEIMS Sub	Rule Applies To			
						ESC	LEA	Campus	Charter
Business Context	41163-0062	If LANG-ACQ-SERVICES-PROVIDED is "Services not Provided", then FREQUENCY-OF-SERVICES and HOURS-SPENT-RECEIVING-SERVICES must not be reported.	F	Y			Y		Y
		TX-FrequencyOfServices and TX-HoursSpentReceivingServices must not be reported when TX-LangAcqServicesProvided is reported as "Services not Provided".							

2021-2022: BUSINESS RULE UPDATES

■ 2021-2022 Deleted Validation Rules

Rule Type	Rule #	Rule Text / Business Meaning	Error Level	TSDS	PEIMS Sub	Rule Applies To			
						ESC	LEA	Campus	Charter
Field Validation	41163-0054	If LANG-ACQ-SERVICES-PROVIDED is not blank, then FREQUENCY-OF-SERVICES and HOURS-SPENT-RECEIVING-SERVICES must not be blank.	F	Y			Y		Y
		TX-FrequencyOfServices and TX-HoursSpentReceivingServices must be reported if TX-LangAcqServicesProvided is reported.							

Rule Type	Rule #	Rule Text / Business Meaning	Error Level	TSDS	PEIMS Sub	Rule Applies To			
						ESC	LEA	Campus	Charter
Business Context	41163-0063	If FREQUENCY-OF-SERVICES is "None", then LANG-ACQ-SERVICES-PROVIDED must be "Services not Provided" and HOURS-SPENT-RECEIVING-SERVICES must be "0 Hours".	F	Y			Y		Y
		TX-LangAcqServicesProvided must be reported as "Services not Provided" and TX-HoursSpentReceivingServices must be reported as "0 Hours" when TX-FrequencyOfServices is reported as "None".							

Rule Type	Rule #	Rule Text / Business Meaning	Error Level	TSDS	PEIMS Sub	Rule Applies To			
						ESC	LEA	Campus	Charter
Business Context	41163-0064	If HOURS-SPENT-RECEIVING-SERVICES is "0 Hours", then LANG-ACQ-SERVICES-PROVIDED must be "Services not Provided" and FREQUENCY-OF-SERVICES must be "None".	F	Y			Y		Y
		TX-LangAcqServicesProvided must be reported as "Services not Provided" and TX-FrequencyOfServices must be reported as "None" when TX-HoursSpentReceivingServices is reported as "0 Hours".							

2021-2022: CODE TABLE UPDATES

DC156 – LANGUAGE-ACQUISITION-SERVICES-PROVIDED-CODE

■ 2020-2021

Code Table Id	Name	XML Name	Date Issued	Date Updated
DC156	LANGUAGE-ACQUISITION-SERVICES-PROVIDED-CODE	TX-LanguageAcquisitionServicesProvidedCode	03/01/2020	7/1/2020
Code	Translation			
00	Services not Provided			
01	Direct			
02	Indirect			
03	Consultative			

■ 2021-2022

Code Table Id	Name	XML Name	Date Issued	Date Updated
DC156	LANGUAGE-ACQUISITION-SERVICES-PROVIDED-CODE	TX-LanguageAcquisitionServicesProvidedCode	03/01/2020	3/1/2021
Code	Translation			
00	Services not Provided			
01	Direct			
02	Indirect/Consultative			

2021-2022: CODE TABLE UPDATES

DC157 – FREQUENCY-OF-SERVICES-CODE

■ 2020-2021

Code Table Id	Name	XML Name	Date Issued	Date Updated
DC157	FREQUENCY-OF-SERVICES-CODE	TX-FrequencyOfServicesCode	03/01/2020	7/1/2020
Code	Translation			
00	None			
01	Daily			
02	Weekly			
03	Monthly			
04	Less Than Monthly			

■ 2021-2022

Code Table Id	Name	XML Name	Date Issued	Date Updated
DC157	FREQUENCY-OF-SERVICES-CODE	TX-FrequencyOfServicesCode	03/01/2020	3/1/2021
Code	Translation			
01	Daily			
02	Weekly			
03	Monthly			
04	Less Than Monthly			

2021-2022: CODE TABLE UPDATES

DC158 – HOURS-SPENT-SERVICES-CODE

■ 2020-2021

Code Table Id	Name	XML Name	Date Issued	Date Updated
DC158	HOURS-SPENT-SERVICES-CODE	TX-HoursSpentServicesCode	03/01/2020	
Code	Translation			
00	0 Hours			
01	Less Than 1 Hour			
02	1 to 3 Hours			
03	More Than 3 Hours up to 5 Hours			
04	More Than 5 Hours			

■ 2021-2022

Code Table Id	Name	XML Name	Date Issued	Date Updated
DC158	HOURS-SPENT-SERVICES-CODE	TX-HoursSpentServicesCode	03/01/2020	3/1/2021
Code	Translation			
01	Less Than 1 Hour			
02	1 to 3 Hours			
03	More Than 3 Hours up to 5 Hours			
04	More Than 5 Hours			

2021-2022: REPORT UPDATES

- **E1723 ELIGIBILITY-DATE** will now populate the 'Elig Eff Date' column in the SELO-000-001 report.

Texas Education Agency
SELO-000-001
vnn.n.n
*** CONFIDENTIAL ***

TSDS SPECIAL EDUCATION LANGUAGE ACQUISITION ROSTER
LEA-level Data
Campuses: 001, 002, 006
2020-2021 YRLY Submission

Tuesday 6/30/2020 12:41PM
Page 2 of n

LEA: nnnnnn - DistrictName1

Campus1 Name (nnnnnnnn)

Student Name	Unique ID Local ID	Student ID Date of Birth	Sex Age on 9/1	Eth/Race LEP	Prog Type Instru Set	Pref Home Comm	Disability		Language Acq Services			Hearing Ampl			Assesment Info	
							Disab	Elig Effv Date	LAS Prvd	Freq of Svcs	LAS Hrs	HA Type	HA Access	HA Avg Dly	Tool/ Assesmt	Assesmt Results
Lastname Gen, Firstname Midname1	nnnnnnnnnn	nnnnnnnnnn	F	A	33	Aaa	AA		Aaaaa	Aaaa	Aaaaa	N/A			Aaaaaa	Aaaaa
	nnnnnnnnnn	MM/DD/YYYY	n	nnnnnnnnnn	nn		AA	MM/DD/YYYY								
Lastname Gen, Firstname Midname2	nnnnnnnnnn	nnnnnnnnnn	M	AA	33	Aaaa	AA	MM/DD/YYYY	Aaaaa	Aaaa	Aaaaa	Aaaaa	A	Aaaa	Aaaaaa	Aaaaa
	nnnnnnnnnn	MM/DD/YYYY	n	nnnnnnnnnn	nn		AA	MM/DD/YYYY	Aaaaa	Aaaa	Aaaaa	Aaaaa	A	Aaaa	Aaaaaa	Aaaaa
Lastname Gen, Firstname Midname3	nnnnnnnnnn	nnnnnnnnnn	M	A		Aaa	AA	MM/DD/YYYY	Aaaaa	Aaaa	Aaaaa	Aaaaa	A	Aaaa	Aaaaaa	Aaaaa
	nnnnnnnnnn	MM/DD/YYYY	n	nnnnnnnnnn	nn		AA	MM/DD/YYYY								
Lastname Gen, Firstname Midname4	nnnnnnnnnn	nnnnnnnnnn	F	AAA	33	Aaa	AA		Aaaaa	Aaaa	Aaaaa	Aaaaa	A	Aaaa	Aaaaaa	Aaaaa
	nnnnnnnnnn	MM/DD/YYYY	n	nnnnnnnnnn	nn		AA	MM/DD/YYYY								
Lastname Gen, Firstname Midname5	nnnnnnnnnn	nnnnnnnnnn	M	A	33	Aaa	AA	MM/DD/YYYY	Aaaaa	Aaaa	Aaaaa	N/A			Aaaaaa	Aaaaa
	nnnnnnnnnn	MM/DD/YYYY	n	nnnnnnnnnn	nn		AA	MM/DD/YYYY								

AGENDA

■ SELA

- 2020-2021
 - Submission Counts
- 2021-2022
 - Data Element Updates
 - Business Rule Updates
 - Code Table Updates
 - Report Updates
- **Current Known Issues**
- Timeline
- Technical Resources

CURRENT KNOWN ISSUES

- Report **SELO-100-001 Special Education Language Acquisition Roster** is currently including inactive campuses when the ‘*All Campuses’ report parameter is selected.
 - This issue is tentatively scheduled to be **resolved** in the **January 21, 2022** software release.

AGENDA

■ SELA

- 2020-2021
 - Submission Counts
- 2021-2022
 - Data Element Updates
 - Business Rule Updates
 - Code Table Updates
 - Report Updates
- Current Known Issues
- **Timeline**
- Technical Resources

TIMELINE: 2021-2022

Submission Due: June 23, 2022

Special Education Language Acquisition Collection

TSDS ready to load data to eDM	August 2, 2021
SELA ready for users to promote data	September 13, 2021
SELA ready for users to complete	May 16, 2022
SELA submission due date for LEAs	June 23, 2022

AGENDA

■ SELA

- 2020-2021
 - Submission Counts
- 2021-2022
 - Data Element Updates
 - Business Rule Updates
 - Code Table Updates
 - Report Updates
- Current Known Issues
- Timeline
- **Technical Resources**

TECHNICAL RESOURCES

- **Technical Specifications:**
 - [TSDS Web-Enabled Data Standards \(TWEDS\)](#)
- **Technical Support:**
 - TSDSCustomerSupport@tea.texas.gov
- **SELA Program Area:**
 - [FAQ and other state guidance resources for AI students](#)
 - [TAA – HB 548](#)
- **Knowledge Base Articles:**
 - [TSDSKB-612](#) SELA: *Frequently Asked Questions (FAQ)*
 - [TSDSKB-615](#) SELA: *Definition of Learning Acquisition Services*
 - [TSDSKB-616](#) SELA: *Definition of Assessment Types*

TEA

Questions

tsds





SPPI-14

AGENDA

■ SPPI-14

- 2021-2022
 - Application Updates
 - Report Updates
 - Business Rule Updates
 - Code Table Updates
- Current Known Issues
- Timeline
- Technical Resources

AGENDA

- SPPI-14
 - **2021-2022**
 - Application Updates
 - Report Updates
 - Business Rule Updates
 - Code Table Updates
 - Current Known Issues
 - Timeline
 - Technical Resources

2021-2022: APPLICATION UPDATES

- Previous SPPI-14 data collections in TSDS did not capture **ADA 0** students because they were not reported in the prior year PEIMS Summer submission.
 - For 2020-2021, these students were reported through a spreadsheet outside of TSDS.
- Beginning with the **2021-2022** school year, the SPPI-14 **promotion logic** will be updated to capture special education students from both the prior year **PEIMS Fall** and **PEIMS Summer** submissions.
 - Special education students with an ADA-ELIGIBILITY-CODE of '0' in the prior year **PEIMS Fall** will have their data promoted from that submission.
 - All other SPED students reported in the **PEIMS Summer** submission will have their data promoted from that submission.
 - The CORE application will retrieve this certified data automatically. LEAs **do not need to reload** PEIMS data for the SPPI-14 data collection.

2021-2022: REPORT UPDATES

- The following new report will be implemented to assist **ESCs** and TEA program staff in determining which LEAs are **expected** to submit data for the SPPI-14 collection
 - **SPP0-000-002: TSDS SPPI-14 Expected Student Counts Report**
- The report will only be available at the ESC and TEA level and is tentatively scheduled for Fall 2021.

2021-2022: REPORT UPDATES

- The **SPP0-000-002** report will display the following:
 - **LEA Name**
 - **LEA ID**
 - **LEA Data Status** – the current status of the LEA’s SPPI-14 data collection.
 - **Expected Student Counts** – the number of students that meet the promotion logic for SPPI-14, based on the prior year certified PEIMS data and the data loaded to the ODS for PEIMS Fall in the current school year.

Texas Education Agency

SPP0-000-002

vyy.n.n

TSDS SPPI-14 Expected Student Counts Report

ESC-level Data

Day MM/DD/YYYY nn:nn AM/PM

Page n of n

ESC: nnnnnn - RegionName1

LEA Name	LEA ID	LEA Data Status	Expected Student Counts
Bugsuffle ISD	020906	NOT STARTED	250
Houston ISD	101912	PROMOTED	500
Katy ISD	101914	INITIATED	300
aaaaaaaaaaaa	nnnnnn		nn,nnn

2021-2022: BUSINESS RULE UPDATES

- 2021-2022
 - No New Business Rules
 - No Updated Business Rules
 - No Deleted Business Rules

2021-2022: CODE TABLE UPDATES

- 2021-2022
 - No New Code Tables
 - No Updated Code Tables
 - No Deleted Code Tables

AGENDA

- SPPI-14
 - 2021-2022
 - Application Updates
 - Report Updates
 - Business Rule Updates
 - Code Table Updates
 - **Current Known Issues**
 - Timeline
 - Technical Resources

CURRENT KNOWN ISSUES

- Students reported as a leaver at a closed campus are not printing on the **SPP0-000-001** report.
 - This issue is tentatively scheduled to be **resolved** in the **November 5, 2021** software release.

AGENDA

■ SPPI-14

- 2021-2022
 - Application Updates
 - Report Updates
 - Business Rule Updates
 - Code Table Updates
- Current Known Issues
- **Timeline**
- Technical Resources

TIMELINE: 2021-2022

Submission Due: February 17, 2022

State Performance Plan Indicator (SPPI) 14 Collection

TSDS ready to load data to eDM	August 2, 2021
SPPI-14 ready for users to promote data	September 13, 2021
SPPI-14 ready for users to complete	October 25, 2021
SPPI-14 submission due date for LEAs	February 17, 2022

AGENDA

■ SPPI-14

- 2021-2022
 - Application Updates
 - Report Updates
 - Business Rule Updates
 - Code Table Updates
- Current Known Issues
- Timeline
- **Technical Resources**

TECHNICAL RESOURCES

- **Technical Specifications:**
 - [TSDS Web-Enabled Data Standards](#)
- **Technical Support:**
 - TSDSCustomerSupport@tea.texas.gov
- **SPPI-14 Program Area:**
 - [SPPI-14 TAA](#)
 - [SPPI-14 – TSDS website](#)
 - SpecialEducation@tea.texas.gov
- **Knowledge Base Articles:**
 - [TSDSKB-585](#) *General FAQs for SPPI-14*
 - [TSDSKB-592](#) *SPPI-14 Promotion Questions*

TEA

Questions

tsds

