

A background image showing a group of students walking up a wide, modern staircase with metal railings. The students are wearing backpacks and casual clothing. Large windows on the right side of the stairs provide a view of trees and a building outside. The image is slightly faded to allow the text to be prominent.

# Census Block Group Tools

# AGENDA

## ■ Census Block Group Tools

- Program Area Updates & Guidance
- 2022-2023 Changes
  - Website Updates
  - Application Updates
  - Report Updates
  - Business Rule Updates
  - Reminders
- Timeline
- Frequently Asked Questions
- Technical Resources
- Questions

## ■ Census Block Tier Mapping for 2023:

- How are the Tiers determined in the mapping document?
- Are the Census Block Group IDs currently based on 2020 Census data?

## ■ Census Block Tier data and Foundation School Programs (FSP):

- State Compensatory Education (SCE) Allotment Calculation:
  - Provides supplemental funding to LEAs to serve the extra needs of students categorized as educationally disadvantaged.
  - Based on 3 factors and 3 entities:
    - **Federal:** Defines a Census Block Group for a specified area based on boundaries determined by the 2020 census.
    - **State/TEA:** Tiers are assigned to each of the GEOID Census Block Groups based on annually published statistics.
    - **Local/LEA:** For each economically disadvantaged student's record, as reported on the PEIMS Fall snapshot, the district includes the student's GEOID based on their home address.

- **Census Block Tier data and Foundation School Programs (FSP):**
  - Teacher Incentive Allotment (TIA)
    - Provides extra compensation to LEAs for employing a designated teacher.
    - Allotment calculation is based on the campus' student point value average as determined by the census block group. The census block group is based on the Census Block Tier Calculation where a student resides.
      - Students at rural campuses are assigned a point value that is two tiers higher than the one determined by the census block group.

- The Census Block Group Tools webpage was updated on **July 29, 2022**, for the following:
  - Census Block Group Calculator:
    - The spreadsheet and instructions were removed from the website. Users will need to download and utilize the new TSDS Census Block Group tool from the TSDS Portal.
  - Census Block Group Map:
    - The map was updated to reference the 2020 US Census data.
  - API Instructions:
    - The instructions were updated with the URL for the 2020 US Census data.
- The Census Block Group Tier Mapping for 2023 spreadsheet is now available.

## ■ Census Block Group Tool

- TEAL Roles/Privileges:
  - Access with 'Census Block Group Tool (CBGT)' privilege under the following TEAL Roles:
    - PEIMS Data Completer
    - ODS Data Loader
    - ODS Campus Data Loader
- Users that have an existing TEAL role above will not need to request the 'Census Block Group Tool (CBGT)' privilege.
- The Census Block Group Tool is now available to download under Utilities tab.

The screenshot shows the TSDS (Texas Student Data System) interface. At the top, a blue header bar contains the text "SEDS LEARNING I. (701603)" and a "GO" button. Below this is the TSDS logo and a navigation bar with tabs: Home, eDM Data Loads, PEIMS, Core Collection, Utilities (highlighted), and Support. The main content area is titled "Utilities" and includes a description: "This page provides links to all the TSDS utilities that you are authorized to access." It also states: "TSDS tools are downloadable stand-alone applications that you run on your local system to help you ensure your data's quality and manage your data." and "Click the button for the utility you wish to download or use." On the right, there is a section titled "Download Utilities" with a card for the "Census Block Group Tool". The card features a blue square icon with a white location pin. To the right of the card, the text reads: "Census Block Group Tool" followed by a description: "The Census Block Group Tool is a utility application that provides the LEAs with a resource to determine a census block group number for each economically disadvantaged student." At the bottom right of the card is a link: "Download Census Block Group Tool" with an external link icon.

SEDS LEARNING I. (701603) GO

**tsds** texas student data system

Home » Utilities

**Utilities**

This page provides links to all the TSDS utilities that you are authorized to access.

TSDS tools are downloadable stand-alone applications that you run on your local system to help you ensure your data's quality and manage your data.

Click the button for the utility you wish to download or use.

**Download Utilities**

**Census Block Group Tool**

The Census Block Group Tool is a utility application that provides the LEAs with a resource to determine a census block group number for each economically disadvantaged student.

[Download Census Block Group Tool](#)

## ■ Information and Guidance:

- **Documentation and Training:**

- Users can access the .pdf help documentation within the downloadable Census Block Group Tool application.
- An [e-learning video link](#) is now available for users to access that provides a detailed walkthrough of the TSDS Census Block Group Tool.

- **Improvements:**

- Previous stability issues with the Census Block Group Tool calculator spreadsheet are expected to be improved with the new Census Block Group Tool application.
- The 2020 U.S. Census data will be retrieved from a TEA local server to provide improved performance.

## ■ Census Block Group Tool (Single Entry Method)

- Allows users to quickly obtain/confirm a Census Block Group Number for an individual student.

The screenshot shows the 'Census Block Group Tool' window with a 'Single Entry' tab selected. The 'Input' section contains fields for Student UID, City (Austin), Zip Extension, Street Address 1 (1701 North Congress Avenue), State (TX), and Zip Code (78701). There are 'Calculate' and 'Reset' buttons. The 'Output' section displays various data points including UID, Street 1, Street 2, City, State, Zip, Zip Extension, Latitude, Longitude, Confidence %, Type, State Code, County Code, Tract, Block Group, and the final 'Census Block Group Number' (484530007001) highlighted in yellow.

**Input**

Student UID:

\* City:

Zip Extension:

\* Street Address 1:

\* State:

Street Address 2:

\* Zip Code:

**Calculate** **Reset**

\* Indicates required data fields

**Output**

UID :		Latitude :	30.278753196932104
Street 1 :	1701 North Congress Avenue	Longitude :	-97.738755695365541
Street 2 :		Confidence % :	100
City :	Austin	Type :	StreetAddress
State :	TX	State Code :	48
Zip :	78701	County Code :	453
Zip Extension :		Tract :	000700
		Block Group :	1
		Census Block Group Number :	484530007001



## ■ Census Block Group Tool (File Upload Method)

- Allows users to obtain the Census Block Group Number for multiple students by uploading a .csv file with the students' address information.
- Information is provided on the number of records and time taken to process.

### File Upload

Select File

File Name : C:\Users\wcurry\OneDrive - Texas Education Agency\Desktop\Census Block Group\New V

Input File	Record Count	Status	Output File	Time Taken (seconds)	Errors File
C:\Users\wcurry\On...	2	Processed	C:\Users\wcurry\On...	0	

Process File

Reset

- The Student Census Block Group numbers are listed in the .csv output file.

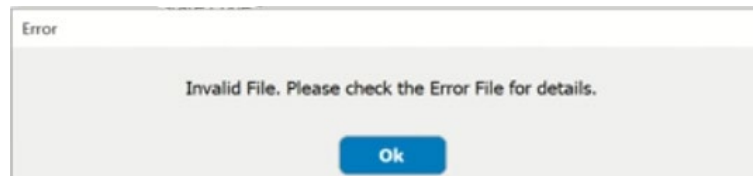
addresses\_10\_Output\_1 - Notepad

File Edit Format View Help

```
30.007734689000074, -97.150307232999978, 100, StreetAddress, 48, 021, 950700, 1, 480219507001
30.283190799000067, -97.239434163999988, 100, PointAddress, 48, 021, 950102, 3, 480219501023
0, 33.593068059000075, -99.265930658999991, 100, PointAddress, 48, 023, 950302, 3, 480239503023
1.408655317000068, -97.744426446999967, 98.840000000000003, PointAddress, 48, 025, 950300, 3, 480259503003
```

## ■ Census Block Group Tool (File Upload Method)

- An error message and file is provided when issues are detected within the .csv file.



### File Upload

Select File

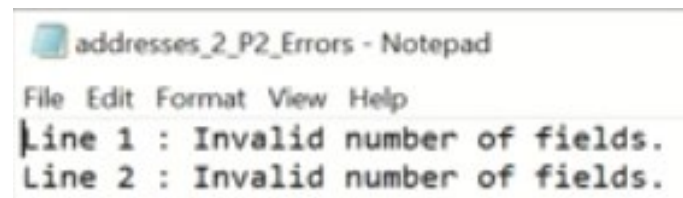
File Name : C:\Users\wcurry\OneDrive - Texas Education Agency\Desktop\Census Block Group\New V

Input File	Record Count	Status	Output File	Time Taken (seconds)	Errors File
C:\Users\wcurry\On...	2	Invalid File			C:\Users\wcurry\On...

Process File

Reset

- Users can easily identify the line number and description of the error.



- 2022-2023
  - No New Reports
  - No Updated Reports
  - No Deleted Reports

- Updated Business Rule Meaning
  - **40100-0224:** For students with an invalid Student-Census-Block-Group code, that does not match a Census Block group Code listed in the Census Tier Mapping spreadsheet for 2022-2023, the student would be assigned to 'Tier 5' which is the lowest Tier.

Rule Type	Rule #	Rule Text / Business Meaning	Error Level	TSDS	PEIMS Sub	ESC	LEA	Campus	Charter
Business Context	40100-0224	If the first two characters of STUDENT-CENSUS-BLOCK-GROUP are "48", then STUDENT-CENSUS-BLOCK-GROUP should be a valid census block group code in the Census Block Tier Mapping list.	S		1		Y	Y	Y
		If TX-StudentCensusBlockGroup is in Texas (48), then it should be a valid census block group code in the Census Block Tier Mapping list from TEA State Funding. If an invalid Texas census block group is reported, the student will be assigned to the lowest Tier.							

# 2022-2023: REMINDERS

- The census block group number is collected in the **PEIMS Fall** submission on the **StudentExtension** complex type

Element ID	Data Element	XML Name	TSD S	FALL	MDYR	SUMR	EXYR	Length	Data Type	Code Table ID
<a href="#">E1648</a>	<a href="#">STUDENT-CENSUS-BLOCK-GROUP</a>	TX-Student Census BlockGroup		Y				12	String	

PEIMS Fall Submission (Sub 1)	Date
TSDS ready to load data to eDM	August 1, 2022
PEIMS Fall submission ready for users to promote data	September 12, 2022
Close of school-start window - Last Friday in September	September 30, 2022
PEIMS Fall snapshot date	October 28, 2022
TSDS PEIMS Fall ready for users to complete, approve, and accept submissions	October 31, 2022
<b>PEIMS Fall first submission due date for LEAs and ESCs</b>	December 8, 2022
<b>PEIMS Fall resubmission due date for LEAs and ESC</b>	January 19, 2023

## FREQUENTLY ASKED QUESTIONS

**Will the existing Census Block Group Calculator spreadsheet be replaced by this new Census Block Group Tool application?**

LEAs will use the downloadable TSDS Census Block Calculator Tool to obtain their Student Census Block Group numbers. The Census Block Group Calculator spreadsheet that is currently available on the TEA Census Block Group Tools website was removed on July 29th.

## FREQUENTLY ASKED QUESTIONS CONTINUED

**Will the new Downloadable CBGT work if the link to the US Census Data Servers are down?**

Yes. The new TSDS Census Block Group Tool utility will retrieve 2020 U.S. Census data from a local server at TEA. This will allow users to quickly retrieve Census Block Group data and avoid being reliant on connecting directly to the US Census Data Servers to retrieve information.



# TECHNICAL RESOURCES

- **Technical Support:**
  - [TSDSCustomerSupport@tea.texas.gov](mailto:TSDSCustomerSupport@tea.texas.gov)
  
- **Instructions/Documentation:**
  - [Census Block Group Tools](#)
  
- **Training:**
  - [Census Block Group Tools e-learning video link](#)
  
- **Knowledge Base Articles:**
  - [TSDSKB-595](#) Census Block Group Number Information / FAQs

# TEA

## Questions

tsds

