

A photograph of a young girl with brown hair in a ponytail, wearing a white long-sleeved shirt, hugging a man in a military camouflage uniform from behind. The man is wearing a matching camouflage cap. The girl is holding a small American flag in her right hand. The background is a clear blue sky. The image is semi-transparent, allowing the text to be overlaid.

Military-Connected Student Program Updates

Why Identify Military-Connected Students?

- The Every Student Succeeds Act (ESSA, 2015) requires local education agencies to identify military-connected students as a unique subgroup
- Their progress on standardized assessments must be reported annually along with other highly mobile groups
- In Texas and other states, military-connected students are identified using a Military Student Identifier, or MSI



Who are our military-connected students?

- TEC §26.006(d) - “Military-connected student” means a student enrolled in a school district or open-enrollment charter school who:
 - (1) is a dependent of a current or former member of:
 - the United States military;
 - the Texas National Guard; or
 - a reserve force of the United States military; or
 - (2) was a member of a military or reserve force described by Subdivision (1) who was killed in the line of duty



Capturing the Military Student Identifier in PEIMS

- Students identified as a military-connected student are captured in PEIMS using one of six “military identifier” codes

Code Table Id	Name	XML Name	Date Issued	Date Updated
C197	MILITARY-CONNECTED-STUDENT-CODE	TX-MilitaryConnectedStudentIndicatorType	08/01/2013	8/26/2019
Code	Translation			
0	Not a military-connected student			
1	Student in grade KG – 12 is a dependent of an active duty member of the United States military			
2	Student in grade KG – 12 is a dependent of a current member of the Texas National Guard (Army, Air Guard, or State Guard)			
3	Student in grade KG – 12 is a dependent of a current member of a reserve force in the United States military			
4	Pre-kindergarten student is: 1) a dependent of an active duty member of the armed forces of the United States, including the state military forces or a reserve component of the armed forces, who is ordered to active duty by proper authority, or 2) is the child of a member of the armed forces of the United States, including the state military forces or a reserve component of the armed forces, who was injured or killed while serving on active duty. Note: A student remains eligible for enrollment if the child's parent leaves the armed forces or is no longer on active duty after the child begins a prekindergarten class.			
5	Student in grade KG – 12 is a dependent of a former member of one of the following: - the United States military - the Texas National Guard (Army, Air Guard, or State Guard) - a reserve force in the United States military			
6	Student in grade KG – 12 was a dependent of a member of a military or reserve force in the United States military who was killed in the line of duty			

Military-Connected Students

- Texas is home to 15 active-duty military installations and over 199,000 military-connected students (2nd most nationally)
- School-age dependents of military personnel are faced with numerous transitions during their formative years
- On average, military children move 3x more often than civilian peers[^]
- Military dependents who move from one school to another during high school years are faced with special challenges to learning and future achievement

Sources:

[^] [Revolving Doors: The Impact of Multiple School Transitions on Military Children](#)

- How should a school ask the MSI question in an easy-to-understand way?

Please fill out the following form, sign, and return to the campus for your KG-12th grade student

Military Connected Student

- ☐ Student is a dependent of a member of the Army, Navy, Air Force, Marine Corps or Coast Guard on Active Duty
- ☐ Student is a dependent of a member of the Texas National Guard (Army, Air Guard, or State Guard)
- ☐ Student is a dependent of a member of a reserve force in the United States military (Army, Navy, Air Force, Marine Corps or Coast Guard)
- ☐ None of the above

Sample Questionnaire

- Here is a sample paper military student identifier questionnaire from Houston ISD



HOUSTON INDEPENDENT SCHOOL DISTRICT

MILITARY-CONNECTED STUDENT SURVEY

All information **MUST** be completed by parent, school personnel or community liaison.

School _____ Grade _____ Date _____

Student Name _____ HISD ID# _____

Dear Parent or Guardian:

The State of Texas requires schools to collect data relating to the enrollment of military-connected students. This collection is done to allow educational institutions the ability to monitor critical elements of education success for children who are dependents of military personnel and show the state's commitment to military personnel and their children.

For students in grades Kindergarten through 12:

1. Is the student a dependent of an active-duty member of the United States military?

☐ Yes ☐ No

2. Is the student a dependent of a current member of the Texas National Guard (Army, Air Guard, or State Guard)?

☐ Yes ☐ No

3. Is the student a dependent of a current member of a reserve force in the United States military?

☐ Yes ☐ No

For pre-kindergarten students only:

4. Is the student a dependent of an active-duty member of the armed forces of the United States, including the state military forces or a reserve component of the armed forces, who is ordered to active duty by proper authority or who was injured or killed while serving on active duty?

☐ Yes ☐ No

For students in grades Kindergarten through 12:

5. Is the student a dependent of a former member of the following: the United States military, the Texas National guard (Army, Air Guard, or State Guard), or a reserve force in the United States military?

☐ Yes ☐ No

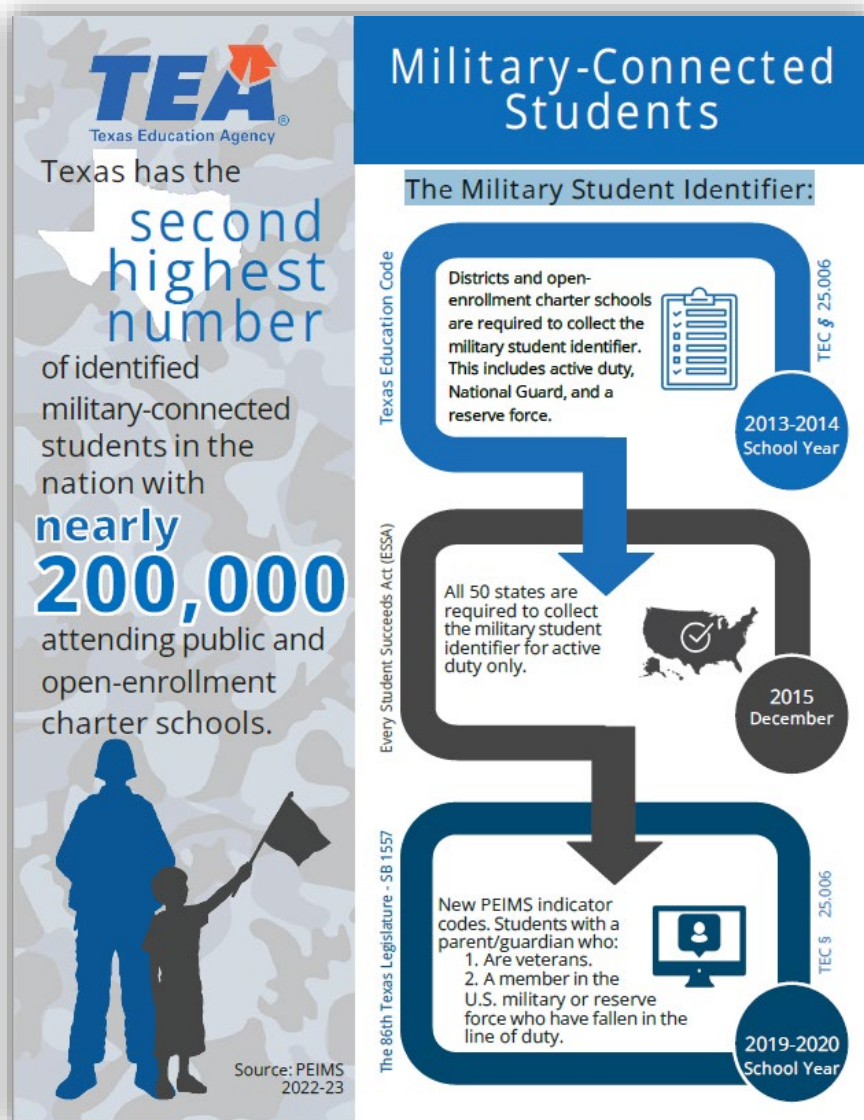
6. Is the student a dependent of a member of a military or reserve force in the United States military who was killed in the line of duty?

☐ Yes ☐ No

If you answered "Yes" to the questions above, district personnel will contact you to provide additional information. Please complete the following information:

Parent/Guardian	Home Address	Telephone Number

Military Identifier Infographic



Strengthening Military Student Identification

Texas Education Code § 25.006 requires districts and open-enrollment charter schools to collect data to identify their military-connected student population and submit to the Texas Education Agency.

Students in K-12th grade:

- ☐ Student is a dependent of a current member of one of the following:
 - ☐ U.S. military;
 - ☐ Texas National Guard (Army, Air Guard, or State Guard); or
 - ☐ A reserve force.
- ☐ Student is a dependent of a former member of one of the following:
 - ☐ U.S. military;
 - ☐ Texas National Guard (Army, Air Guard, or State Guard); or
 - ☐ A reserve force.
- ☐ Student was a dependent of a member of the U.S. military or reserve force who has fallen in the line of duty.

Prekindergarten students:

- ☐ A dependent of an active duty member of the armed forces of the United States including the state military forces or a reserve component of the armed forces who is ordered to active duty by proper authority.
- ☐ A dependent of the armed forces of the United States including the state military forces or a reserve component of the armed forces who is injured or fallen in the line of duty.

FAQs

- What are the benefits of identifying students as military-connected?**
District and open-enrollment charter schools will be able to appropriately link military connected students and their families to resources, services and laws (MIC3 - www.mic3.net) they are eligible for because of their active duty status.
- What are a school's requirements for collecting military student identifier data?**
Districts and open-enrollment charter schools must include the military student identifier question in their student enrollment packet.
- Does the parent/guardian need to provide proof of their military status?**
Verification of military status is not required for the purposes of the military student identifier. Verification may be required if the school has a special program for which there is an eligibility requirement, such as state-funded prekindergarten. Districts and open-enrollment charter schools, should not make copies of Department of Defense (DoD) identification cards.
- How does the military connected student identifier in the Public Education Information Management System (PEIMS) differ from the Federal Impact Aid Survey?**
PEIMS allows the TEA to collect data from districts and open-enrollment charter schools regarding their military connected student population also known as the military student identifier. Districts and open-enrollment charter schools may choose to apply for Impact Aid funds based on the number of military-connected students; however, the collection of the Impact Aid survey is not connected to the PEIMS military student identifier. Districts and open-enrollment charter schools should ensure they are collecting the PEIMS military student identifier through their enrollment process.

TEA
Texas Education Agency

TEA.Texas.gov/mil

512.463.9098

MilitaryConnectedStudents@tea.texas.gov

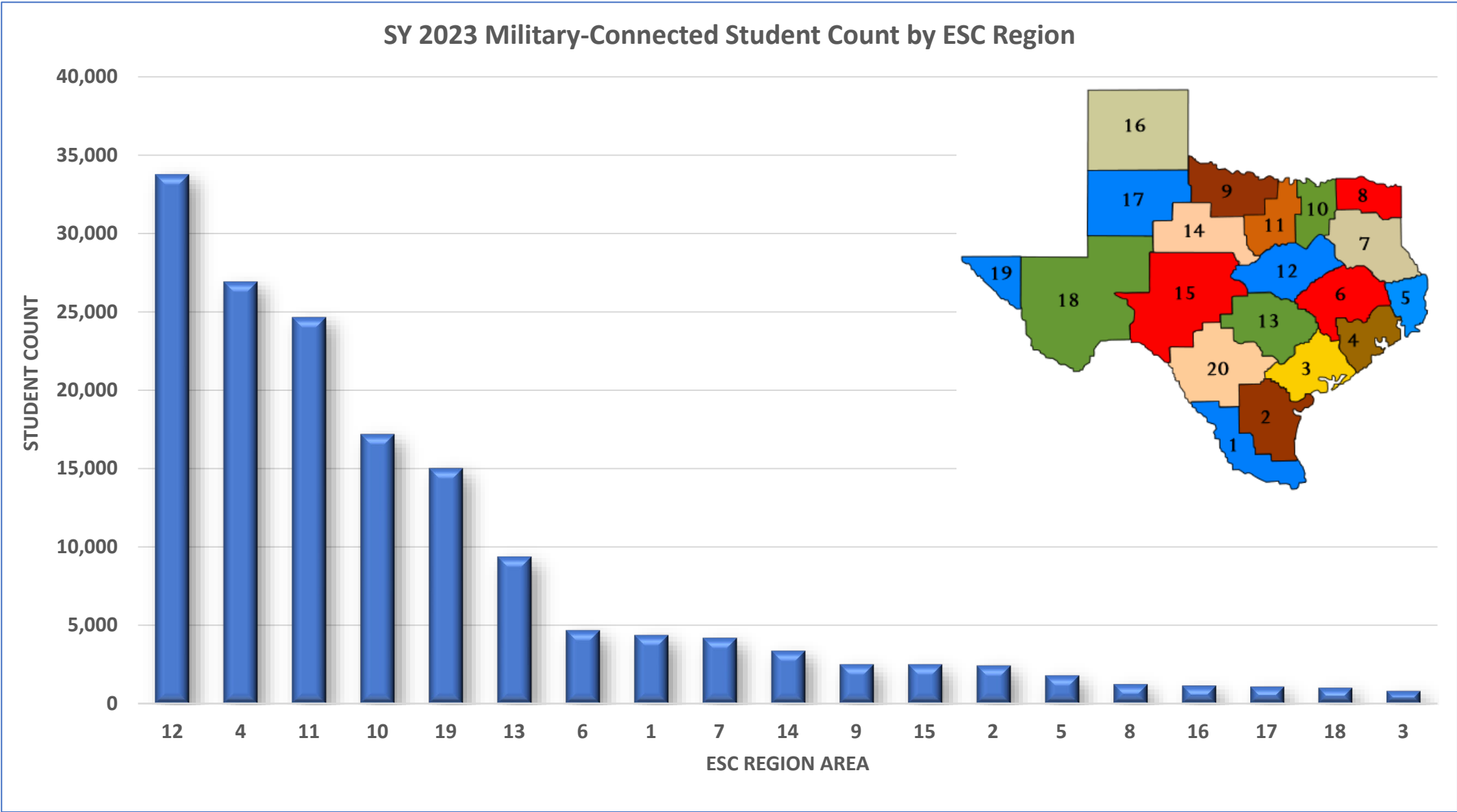
SY 2023 Military-Connected Students by ESC Region

REGION	AREA	M-C STUDENTS
20	San Antonio	41,303
12	Waco	33,746
4	Houston	26,906
11	Fort Worth	24,634
10	Richardson	17,187
19	El Paso	15,010
13	Austin	9,376
6	Huntsville	4,684
1	Edinburg	4,373
7	Kilgore	4,191
14	Abilene	3,377
9	Wichita Falls	2,509
15	San Angelo	2,506
2	Corpus Christi	2,428
5	Beaumont	1,799
8	Mount Pleasant	1,239
16	Amarillo	1,150
17	Lubbock	1,091
18	Midland	1,010
3	Victoria	807

- This table shows the number of military-connected students by ESC Region listed in descending order
- Some areas with large military-connected populations are not near a military installation but are near an ESC
- Partnering with ESCs could help bridge the knowledge gap between TEA and LEAs

*SY 2023 Data (Based on Fall 2022 Snapshot Submission)

SY 2023 Military-Connected Student Distribution by ESC Region



SY 2022 Military-Connected Students by ESC Region

REGION	AREA	SY 2023 M-C STUDENTS	SY 2022 M-C STUDENTS	CHANGE
20	San Antonio	41,303	36,696	12.55%
12	Waco	33,746	24,034	40.41%
4	Houston	26,906	24,142	11.45%
11	Fort Worth	24,634	22,507	9.45%
10	Richardson	17,187	19,344	-11.15%
19	El Paso	15,010	14,611	2.73%
13	Austin	9,376	9,579	-2.12%
6	Huntsville	4,684	3,237	44.70%
1	Edinburg	4,373	3,915	11.70%
7	Kilgore	4,191	3,032	38.23%
14	Abilene	3,377	3,265	3.43%
9	Wichita Falls	2,509	1,870	34.17%
15	San Angelo	2,506	2,273	10.25%
2	Corpus Christi	2,428	2,226	9.07%
5	Beaumont	1,799	1,301	38.28%
8	Mount Pleasant	1,239	779	59.05%
16	Amarillo	1,150	691	66.43%
17	Lubbock	1,091	1,126	-3.11%
18	Midland	1,010	827	22.13%
3	Victoria	807	691	16.79%

- This table shows **the change in the number of military-connected students by region** from SY 2022 to SY 2023
- Though most areas showed growth, some areas showed negative growth
- Under-identification of military-connected students can be addressed through a strengthened relationship with our partnership with ESC PEIMS coordinators
- Partnering with ESCs could help bridge the knowledge gap between TEA and LEAs

*SY 2023 Data (Based on Fall 2022 Snapshot Submission)



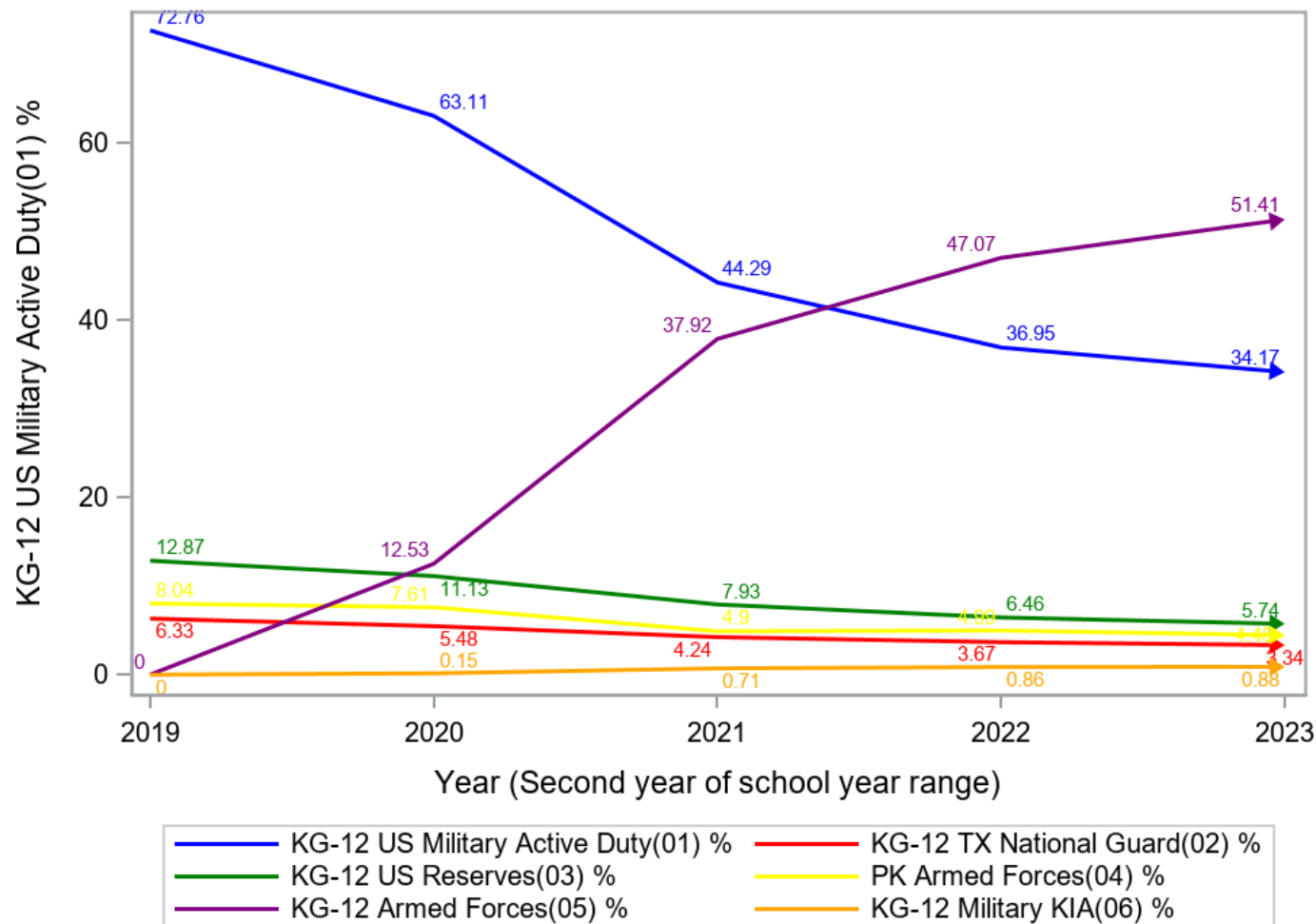
Military Student Identifier SY 2020-SY 2022



Military Status	2020	2021	2022
Active Duty (1)	72,442	71,131	68,103
TX National Guard (2)	6,136	6,599	6,665
Reserve Force (3)	12,498	12,366	11,440
Pre-K (4)	9,405	8,525	8,878
Veteran (5)	15,175	66,118	102,483
Fallen in the Line of Duty (6)	212	1,182	1,757
Total	115,868	176,554	199,326

Change Over Time in Statewide PEIMS MSI Rates

Statewide Military Connected Change by Student Codes (2019-2023)



- 1** Current Member on Active-Duty in US Military
- 2** Current Member of National Guard
- 3** Current Member of Reserve Force in US Military
- 4** Applies to Pre-K only – Member of active duty or state guard or reserve forces called to active duty under Title 10 and/or was killed or injured in the line of duty while on active orders
- 5** Former member of US Military, Guard or Reserve Force in US Military
- 6** Member of military or reserve force in US military killed in the line of duty

PEIMS codes 1-4 were created as a requirement of the Every Students Succeeds Act (ESSA). Codes 5 and 6 were added as a result of state law to expand the definition of military-connected students to include these two additional categories.

Frequently Asked Questions

- What are the benefits of identifying students as military-connected (Military Student Identifier or MSI)?
 - District and open-enrollment charter schools will be able to appropriately link military connected students and their families to resources, services and laws (MIC3 - www.mic3.net) they are eligible for because of their active-duty or veteran status.
- What are a school's requirements for collecting military identifier data?
 - Districts and open-enrollment charter schools must include the military student identifier question in their student enrollment packet.

- Does the parent/guardian need to provide proof of their military status?
 - Verification of military status is not required for the purposes of the military student identifier.
 - Verification may be required if the school has a special program for which there is an eligibility requirement, such as state-funded prekindergarten.
 - Districts and open-enrollment charter schools, should not make copies of Department of Defense (DoD) identification cards.

- How does the military connected student identifier in the Public Education Information Management System (PEIMS) differ from the Federal Impact Aid Survey?
 - The MSI and the Federal Impact Aid Survey are not connected in PEIMS
 - The [Impact Aid Law \(Title VII of ESEA\)](#) allows local school districts to apply for financial assistance if the school district's boundaries include federal land, including Indian lands, that are otherwise exempt from school district tax rolls

What's Next? (Call to Action)

- Talk to your school leaders about the federal and state law requirements to collect data on the Military Student Identifier (MSI)
- How is this collected during the enrollment process?
- Is the MSI questionnaire easy to understand so it doesn't confuse parents?
- Does every student in the school have a MSI code?
 - All students should have a code 0, 1, 2, 3, 4, 5, or 6
- If the parent selects PEIMS code #6 (service member killed in action), does your campus have a process in place for counseling services?
 - Is it possible for the Counseling Department to form a group specifically for kids who have lost a parent for any reason?

Upcoming Trainings and Events

Military Connected Students & Purple Star Presentations:

- Purple Star Application Process Opens *Monday, April 3, 2023 – Friday, June 2, 2023, SY 2023-24*
- Purple Star Application Training Meetings
 - [Thursday, March 30, 2023, at 1pm](#)
 - [Thursday, April 6, 2023, at 10am](#)



Key Resources and Supports

1) TEA HMAR Division Resources

Purpose

To increase awareness, build capacity, and improve TEA supports, resources and tools available for Texas schools to address the unique needs and statutory requirements of highly mobile and at-risk students. Ultimately, the Division exists to improve the school experience and education outcomes of all highly mobile and at-risk students in Texas public schools.



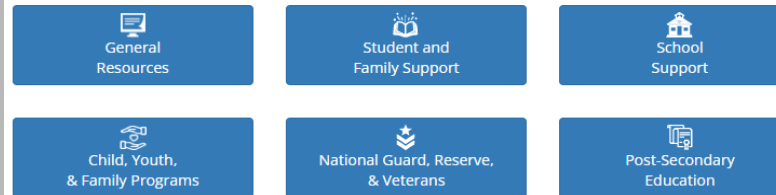
Division Resources



[HMAR Division Website](#)

2) Students, Families & Schools Support

Military-Connected Student and Family Resources



Military Interstate Children's Compact Commission MIC3

The Interstate Compact on Educational Opportunity for Military Children (Military Compact) exists to strengthen transitions and close educational gaps as military families and their children move to a new school district in another state.

[Learn More](#)

Purple Star Campus Designation

The Purple Star Campus Designation recognizes Texas district and charter schools that show their support and commitment to meeting the unique needs of military-connected students and their families.

[Learn More](#) [View 2022-23 Awardees](#)



[Military-Connected Website](#)

3) Military Interstate Compact (MIC3)



MIC3 MEMBER PROFILE TEXAS



OVERVIEW

The Interstate Compact on Educational Opportunity for Military Children was developed jointly by The Council of State Governments' National Center for Interstate Compacts and the U.S. Department of Defense, with input from policy experts, national associations, teachers, school administrators, military families, and federal, state, and local officials. The Compact eases interstate education transition challenges encountered by the children of active duty service members such as enrollment, eligibility, placement and graduation. On average, military students will attend six to nine different school systems from kindergarten to 12th grade.

Initial discussions about the Compact began in 2006, and drafting began early in 2007. First available for legislative consideration in 2008, the Compact was adopted by all 50 states and the District of Columbia in just 6 legislative sessions.

HISTORY

Texas adopted the Compact in May 2009. The model language was adopted with modifications for statutory format. The Legislature altered the State Coordination section with a separate section. The dues are paid by the Texas Education Agency.

Bill sponsor(s): Senator Leticia Van de Putte and Representative Susan Lewis King
Location in Statute or Code: Texas Statutes, Education Code, Chapter 4, 162.001 – 162.005

COMMISSIONER	Michael Morath	2016 – Present
	Michael Williams	2012 – 2016
	Robert Scott	2010 – 2012
DESIGNEE/ALTERNATE	Shelly Ramos	2016 – Present

APPOINTING AUTHORITY: Governor

STATE COUNCIL

Sec. 162.005. STATE COORDINATION.

(a) The Texas Education Agency shall provide for coordination among state agencies, school districts, and military installations concerning this state's participation in and compliance with the compact and compact activities, as required by Article VIII of the compact.

(b) To the extent that the compact requires or authorizes a State Council created in accordance with Article VIII of the compact to perform a duty or function, the Texas Education Agency or the commissioner of education, as appropriate, shall perform that duty or function.

STATE COUNCIL MEETINGS

State Council is in place with names only. The State Council has never met.

ACCOMPLISHMENTS

- Texas hosted the 2010 Annual Business Meeting.

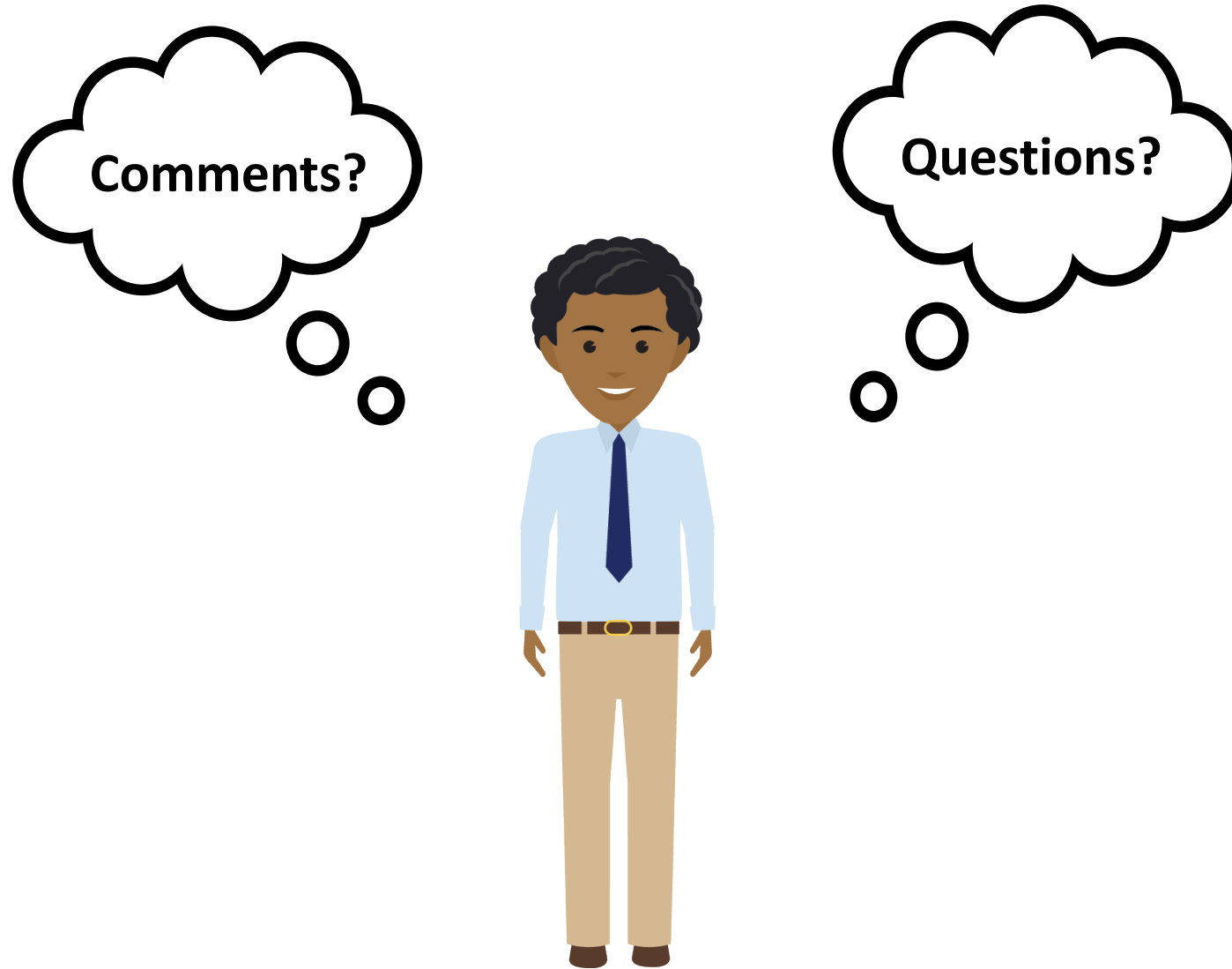
ANNUAL BUSINESS MEETING ATTENDANCE

Texas attended the meeting in 2010, 2014 and 2015 by a Temporary Commissioner. They attended in 2016 with a Commissioner Designee.

[MIC3 Website](#)



Pause to Process



Military Family Resources



- Dr. Jimmy Bowser
 - Highly Mobile State Coordinator
 - militaryconnectedstudents@tea.texas.gov
- [Tea.texas.gov/mil](https://tea.texas.gov/mil)
- Sign-up for TEA Military Newsletter here: <https://public.govdelivery.com/accounts/TXTEA/subscriber/new>

