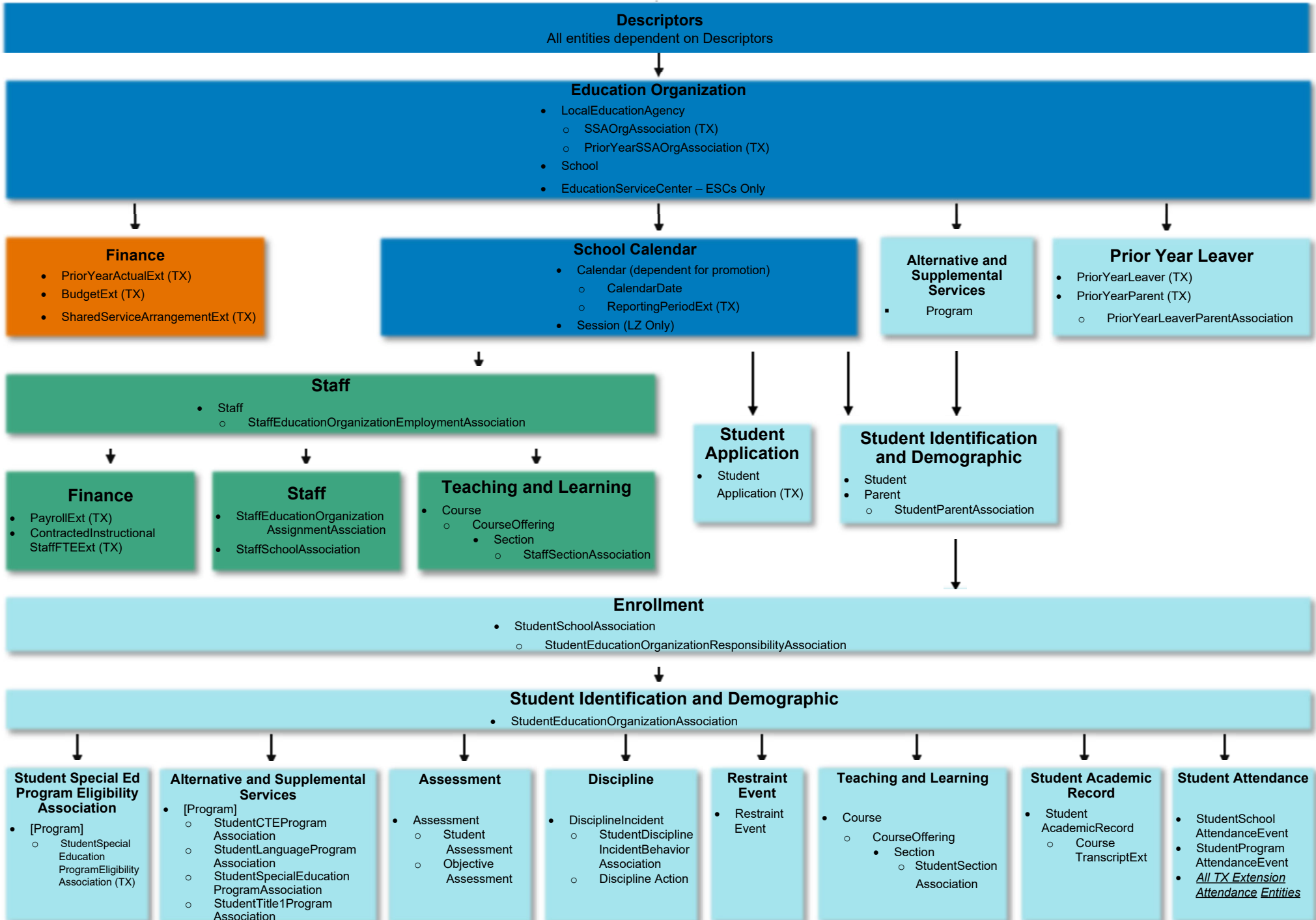


TSDS DOMAIN DEPENDENCY* (2026.2.0)



Key: All Finance Staff Student

* - Graphic depicts Domain Dependencies when loading data into an IODS.

Updated 8.2025

TSDS Domain Dependency (TEDS 2026.2.0)



| Domain Name | Entity (Resource) Name | Publishing Data Dependencies | Retrieving Data Dependencies |
|---|---|---|---|
| | <i>All entities (resources) are dependent on descriptors, most are also dependent on LocalEducationAgency and/or Schools.</i> | <i>Descriptor, LocalEducationAgency, and School are downloaded from TEA, so are not dependencies users will generally need to deal with. Districts may publish local descriptor values.</i> | <i>Resources in the IODS already have all necessary dependent resources within the IODS, so the GET itself does not have dependencies, though it may fail for other reasons. If the returned JSON is used for Posting to another IODS, then dependencies would apply according to POST rules.</i> |
| Education Organization Domain | LocalEducationAgency | No Dependencies | No Dependencies |
| Education Organization Domain | EducationServiceCenter | No Dependencies | No Dependencies |
| Education Organization Domain | SSAOrgAssociationExt (TX) PriorYearSSAOrgAssociation (TX) | LocalEducationAgency | LocalEducationAgency |
| Education Organization Domain | School | No Dependencies | No Dependencies |
| School Calendar Domain | Calendar | School | School |
| School Calendar Domain | CalendarDate | Calendar, School | Calendar, School |
| School Calendar Domain | ReportingPeriodExt (TX) | Calendar, School | Calendar, School |
| School Calendar Domain | Session | School | School |
| Finance Domain | PriorYearActualExt(TX) | No Dependencies | No Dependencies |
| Finance Domain | BudgetExt(TX) | No Dependencies | No Dependencies |
| Finance Domain | SharedServiceArrangementExt(TX) | No Dependencies | No Dependencies |
| Alternative and Supplemental Services Domain | Program | LocalEducationAgency | LocalEducationAgency |
| Student Application | StudentApplication(TX) | No Dependencies | No Dependencies |
| Staff Domain | Staff | No Dependencies | No Dependencies |
| Staff Domain | StaffEducationOrganizationAssignment Association | Staff, LocalEducationAgency or School | Staff, LocalEducationAgency or School |

TSDS Domain Dependency (TEDS 2026.2.0)



| Domain Name | Entity (Resource) Name | Publishing Data Dependencies | Retrieving Data Dependencies |
|--|---|---|---|
| Staff Domain | StaffSchoolAssociation | Staff, StaffEducationOrganizationEmploymentAssociation OR StaffEducationOrganizationAssignmentAssociation, School | Staff, StaffEducationOrganizationEmploymentAssociation OR StaffEducationOrganizationAssignmentAssociation, School |
| Finance Domain | PayrollExt(TX) | Staff | Staff |
| Finance Domain | ContractedInstructionalStaffFTEExt(TX) | Staff | Staff |
| Teaching and Learning Domain | Course | No Dependencies for initial, LocalEducationAgency for POST | No Dependencies for initial, LocalEducationAgency for POST |
| Teaching and Learning Domain | CourseOffering | Session, Course | Session, Course |
| Teaching and Learning Domain | Section | CourseOffering | CourseOffering |
| Teaching and Learning Domain | StaffSectionAssociation | Staff, Section (Session, Course, CourseOffering) | Staff, Section (Session, Course, CourseOffering) |
| Student Identification and Demographics Domain | Student | No Dependencies, StudentSchoolAssociation for subsequent POSTs after initial | Student, StudentSchoolAssociation |
| Student Identification and Demographics Domain | Parent | No Dependencies | Student, Parent, StudentSchoolAssociation, StudentParentAssociation |
| Student Identification and Demographics Domain | StudentParentAssociation | Student, Parent | Student, Parent |
| Student Identification and Demographics Domain | StudentEducationOrganizationAssociation | Student, StudentSchoolAssociation | Student, StudentSchoolAssociation |
| PriorYearLeaver Domain | PriorYearLeaver(TX) | No Dependencies | No Dependencies |
| PriorYearLeaver Domain | PriorYearParent(TX) | No Dependencies | No Dependencies |
| PriorYearLeaver Domain | PriorYearStudentParentAssociation | PriorYearLeaver, PriorYearParent | PriorYearLeaver, PriorYearParent |
| Enrollment Domain | StudentSchoolAssociation | Student, School | Student, School |

TSDS Domain Dependency (TEDS 2026.2.0)



| Domain Name | Entity (Resource) Name | Publishing Data Dependencies | Retrieving Data Dependencies |
|---|--|--|--|
| Enrollment Domain | StudentEducationOrganizationResponsibilityAssociation | Student, StudentSchoolAssociation, LocalEducationAgency | Student, StudentSchoolAssociation, LocalEducationAgency |
| Student Special Education Program Eligibility Association Domain | StudentSpecialEducationProgramEligibilityAssociation(TX) | Student, Program | Student, Program |
| Alternative and Supplemental Services Domain | StudentCTEProgramAssociation | Student, Program, School | Student, Program, School |
| Alternative and Supplemental Services Domain | StudentTitleIPartAProgramAssociation | Student, Program, School | Student, Program, School |
| Alternative and Supplemental Services Domain | StudentSpecialEducationProgramAssociation | Student, Program, School | Student, Program, School |
| Alternative and Supplemental Services Domain | StudentLanguageInstructionProgramAssociation | Student, Program, School | Student, Program, School |
| Assessment Domain | Assessment | No Dependencies | No Dependencies |
| Assessment Domain | StudentAssessment | Student, Assessment | Student, Assessment |
| Assessment Domain | ObjectiveAssessment | Assessment | Assessment |
| Discipline Domain | DisciplineIncident | School | School |
| Discipline Domain | StudentDisciplineIncidentBehaviorAssociation | Student, DisciplineIncident | Student, DisciplineIncident |
| Discipline Domain | DisciplineAction | DisciplineIncident, StudentDisciplineIncidentBehaviorAssociation | DisciplineIncident, StudentDisciplineIncidentBehaviorAssociation |
| Restraint Event Domain Entity | RestraintEvent | Student | Student |
| Teaching and Learning Domain | Course | No Dependencies for initial, LocalEducationAgency for POST | No Dependencies for initial, LocalEducationAgency for POST |

TSDS Domain Dependency (TEDS 2026.2.0)



| Domain Name | Entity (Resource) Name | Publishing Data Dependencies | Retrieving Data Dependencies |
|--------------------------------|---|--|--|
| Teaching and Learning Domain | CourseOffering | Session, Course | Session, Course |
| Teaching and Learning Domain | Section | CourseOffering | CourseOffering |
| Teaching and Learning Domain | StudentSectionAssociation | Student, Section (Session, Course, CourseOffering) | Student, Section (Session, Course, CourseOffering) |
| Student Academic Record Domain | StudentAcademicRecord | Student, School | Student, School |
| Student Academic Record Domain | CourseTranscript | StudentAcademicRecord, Courses | StudentAcademicRecord, Courses |
| Student Attendance Domain | StudentSchoolAttendanceEvent | Student, Session | Student, Session |
| Student Attendance Domain | StudentProgramAttendanceEvent | Student, Program | Student, Program |
| Student Attendance Domain | BasicReportingPeriodAttendance (TX) | Student, Calendar | Student, Calendar |
| Student Attendance Domain | SpecialProgramsReportingPeriodAttendance (TX) | Student, Calendar | Student, Calendar |
| Student Attendance Domain | SpecialEducationProgramReportingPeriodAttendance (TX) | Student, Calendar | Student, Calendar |
| Student Attendance Domain | CTEProgramReportingPeriodAttendance (TX) | Student, Calendar | Student, Calendar |
| Student Attendance Domain | BilingualESLProgramReportingPeriodAttendance (TX) | Student, Calendar | Student, Calendar |
| Student Attendance Domain | FlexibleRegularProgramReportingPeriodAttendance (TX) | Student, Calendar | Student, Calendar |
| Student Attendance Domain | FlexibleSpecialEducationProgramReportingPeriodAttendance (TX) | Student, Calendar | Student, Calendar |
| Student Attendance Domain | FlexibleCTEProgramReportingPeriodAttendance (TX) | Student, Calendar | Student, Calendar |
| Student Attendance Domain | FlexibleBilingualESLProgramReportingPeriodAttendance (TX) | Student, Calendar | Student, Calendar |
| Student Attendance Domain | ExtendedSchoolYearServicesAttendance (TX) | Student | Student |