

TSDS UPGRADE PROJECT

Vendor SDK Installation Guide



SDK Version
2024.2.0

Table of Contents

- Overview 2
- Required Software 2
 - Docker 2
- Setup / Configuration 2
 - docker-compose.yml 3
 - Environment File 3
 - Register ODS Instances..... 3
- SDK Usage..... 4
 - Running the Environment 4
 - Services..... 4
 - Tearing Down the Environment 5
- Ed-Fi ODS/API Swagger 6
- Ed-Fi ODS Admin App 6
 - Username & Password 6
 - ODS Instances..... 7
- Technical Support..... 8

OVERVIEW

The Software Development Kit (SDK) provides a fully functional set of resources for installation on local systems for the purpose of development and testing. This SDK includes the following:

- Ed-Fi ODS
- Ed-Fi Admin App
- Swagger
- WebApi

The Ed-Fi ODS and WebApi includes all the TEA defined extensions and pre-populated TEA descriptors, as well as applicable education organizations and courses specific to the Texas Student Data System (TSDS).

REQUIRED SOFTWARE

Docker is required to setup the environment.

DOCKER

Docker is an open platform for developing and running applications for the TSDS Upgrade project.

For installation refer to: <https://docs.docker.com/get-docker/>

- [Docker Desktop for Windows](#)
- [Docker Desktop for Mac](#)
- [Docker Desktop for Linux](#)

WINDOWS: For x64 machines, you may need to install the WSL2 Linux kernel update package below:

- <https://docs.microsoft.com/en-us/windows/wsl/install-manual#step-4---download-the-linux-kernel-update-package>

Compose plugin: You may need to install the docker compose CLI plugin below:

- <https://docs.docker.com/compose/install/compose-plugin/>

SETUP / CONFIGURATION

The following files are **required** and should reside in the same folder:

- docker-compose.yml
- settings.env

The following file is **optional** to assist with registration of multiple instances:

- registerOdsInstancesForAdminAppTest.csv

DOCKER-COMPOSE.YML

Download and save the [docker-compose.yml](#) file provided for the TSDS Upgrade Project.

For further information on Docker Compose, refer to: <https://docs.docker.com/compose/>.

LINUX: Open docker-compose.yml file in a text editor and change *WebApiVersionUrl* with *swagger service* and *ProductionApiUrl* with *adminapp* service by specifying the host's IP address respectively.

ENVIRONMENT FILE

Download and save the [settings.env](#) file provided for the TSDS Upgrade Project. This file contains the password for the database and all ports used by the WebApi, AdminApp, Swagger, and the database.

Open the file with a text editor and make any changes as necessary for local development.

NOTE: For this 2024 SDK version, all ports were changed to start with “24” to avoid collisions with the 2023 SDK version. As a result, the MS SQL Database will run in a non-standard port. This is by design to avoid collisions with the existing SQL Server instances that might be running on the machine.

REGISTER ODS INSTANCES

Download and save the [registerOdsInstancesForAdminAppTest.csv](#) file for the TSDS Upgrade Project.

This allows users to register **multiple instances in bulk** with the [Ed-Fi ODS Admin App](#).

Open the file and make any changes as necessary for local development.

NOTE: A single instance can be registered manually through the Ed-Fi ODS Admin App with the need to import this .csv file.

SDK USAGE

RUNNING THE ENVIRONMENT

Start the [Docker Desktop](#) application.

To spin up the environment, open Command Prompt or PowerShell (Windows) or Terminal (MacOS/Linux) window in the folder that the [docker-compose.yml](#) and [settings.env](#) files reside.

Enter the following command:

```
docker compose -p tsds_ods_sdk_2024 --env-file ./settings.env up -d
```

It may take several minutes for the application to start after running the command.

NOTE: Do not close the terminal window or use CTL-c to interrupt the execution of the command while it is processing.

SERVICES

After verifying all containers are running in the [Docker Desktop](#) application, check the status of services by opening a web browser to the following:

NOTE: The following are the default port numbers. These can be modified in the [settings.env](#) file, but will need to be reflected in the database (see section below).

WINDOWS/MAC:

- WebAPI: <http://localhost:24030>
- Swagger: <http://localhost:24040>
- AdminApp: <http://localhost:24050>

LINUX:

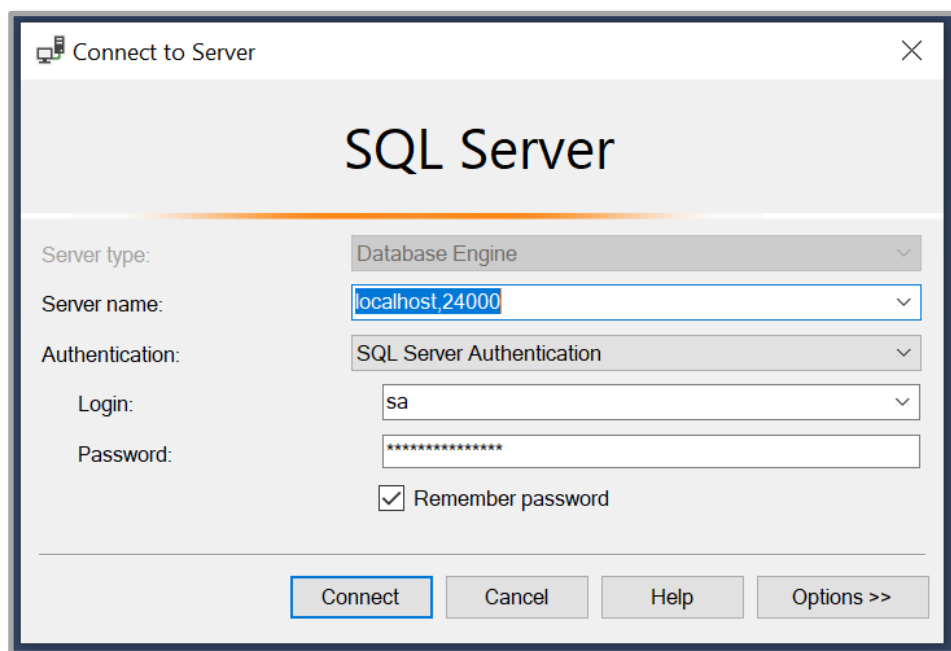
- Use the host IP address specified in the [settings.env](#) file.

DATABASE:

To access the SDK database:

- Open Microsoft SQL Server Management Studio or any database client that supports SQL Server
- Enter the host as **localhost,24000** (replace '24000' with what is specified in [settings.env](#) file)

- Select “**SQL Server Authentication**” from the “**Authentication**” drop down
- Enter “**sa**” for login
- Enter the password is specified on the [settings.env](#) file.



TEARING DOWN THE ENVIRONMENT

If SDK 2024.1.0 was previously installed, you must uninstall prior to installing SDK 2024.2.0.

Please following the follow instructions.

To tear down the environment, open Command Prompt or PowerShell (Windows) or Terminal (MacOS/Linux) window in the folder that the [docker-compose.yml](#) and [settings.env](#) files reside.

Enter the following command:

```
docker compose -p tsds_ods_sdk_2024 --env-file ./settings.env down -v --remove-orphans
```

NOTE: If -d has been specified during [Running the Environment](#) then you will need to open another command line window, change the current directory into the folder, and enter the above command

This will not delete the data in the SQL Server database, unless -v is specified.

ED-FI ODS/API SWAGGER

To access the swagger endpoint for the ODS/API, navigate to the target school year endpoint.

- 2024 School Year: <http://localhost:24040>
- Click the green “**Authorize**” button..

NOTE: If the port number has been changed, please change 24040 to what is specified in the [settings.env](#) file

ED-FI ODS ADMIN APP

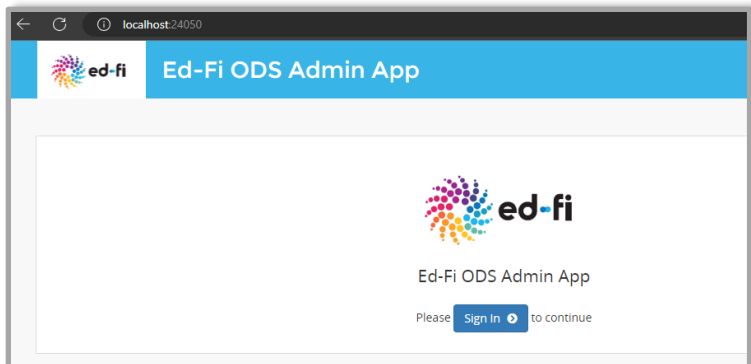
To access the Ed-Fi ODS Admin App, navigate to the following URL: <http://localhost:24050>

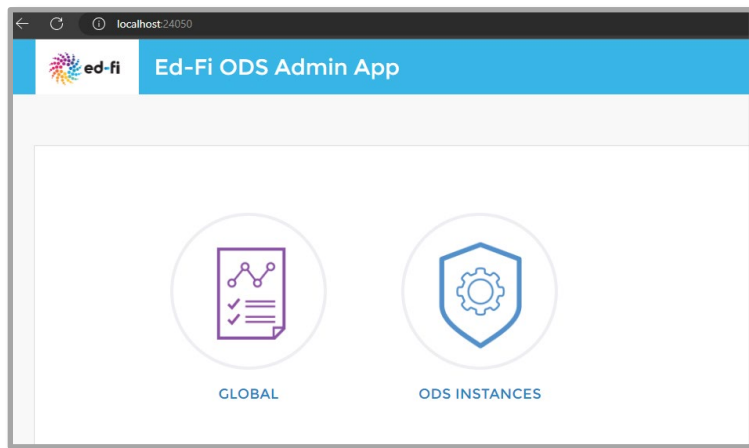
NOTE: If the port number has been changed, please change 24050 to what is specified in the [settings.env](#) file

USERNAME & PASSWORD

Username: admin@tea.texas.gov

Password: Testing@1






ODS INSTANCES

To register a single instance through the Ed-Fi ODS Admin App, select **ODS INSTANCES** and then select **Register A New Instance**.

To register multiple instances in bulk through the Ed-Fi ODS Admin App, select **ODS INSTANCES** and then select **Register Many Instances in Bulk**.

Modify and utilize the provided [registerOdsInstancesForAdminAppTest](#).csv file as needed. Select **Chose File** to upload. Select **Register Instances** and wait to process. Confirmation messages will be shown if successful.

localhost:24050/OdsInstances/BulkRegisterOdsInstances

 **Ed-Fi ODS Admin App** admin@tea.texas.gov Log Out

[Home](#)

BULK REGISTER ODS INSTANCES

Instances Data File: No file chosen

[Back](#) [Register Instances](#)

TECHNICAL SUPPORT

Please contact TSDSCustomerSupport@tea.texas.gov for technical assistance and support.